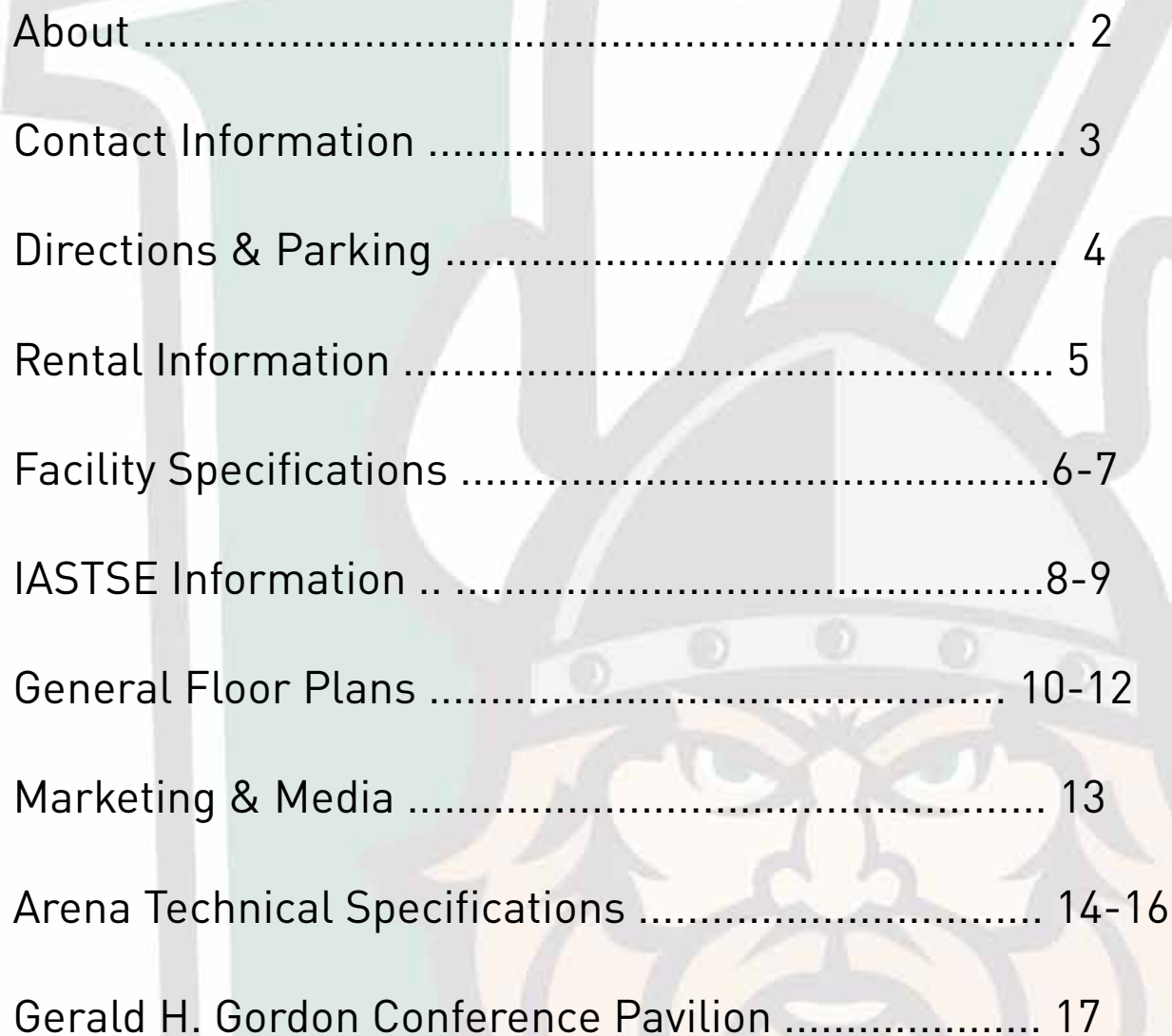




2000 PROSPECT AVENUE • CLEVELAND, OHIO





About .....	2
Contact Information .....	3
Directions & Parking .....	4
Rental Information .....	5
Facility Specifications .....	6-7
IASTSE Information .....	8-9
General Floor Plans .....	10-12
Marketing & Media .....	13
Arena Technical Specifications .....	14-16
Gerald H. Gordon Conference Pavilion .....	17



### Cleveland State University

Established as a state-assisted university in 1964, Cleveland State University assumed a tradition of excellence when it adopted the buildings, faculty, staff, and curriculum of the former Fenn College, a private institution of 2,500 students that was founded in 1929.

Cleveland State now has an enrollment of more than 17,000 students, eight colleges and more than 200 academic programs, Cleveland State is committed to providing a hands-on learning environment where faculty and students connect and ideas mesh with real-world experience.

An unprecedented influx of new students is energizing the University. Fresh ideas are surging as we extend our classrooms into the community. New paths to promising careers are being forged.



### Wolstein Center

The Wolstein Center at Cleveland State University plays host to a myriad of special events, including contemporary concerts by international artists, Division I basketball games for the Horizon League Conference, family shows, rodeos, professional and amateur sporting events, trade shows and conventions, black-tie affairs and fund raisers in our grand ballroom, and a vast array of community and civic events.

The facility itself is a \$55 million, state-of-the-art, full service, multi-purpose facility that is capable of seating up to 15,000 people for special events. The Wolstein is accessible to approximately 4,500,000 people within a 100 mile radius, making us a primary selection for many types of programming and attractions.



### The Wolstein Center at Cleveland State University

2000 Prospect Avenue  
Cleveland, Ohio 44115  
Phone: (216) 687-9292  
Fax: (216) 687-5450  
[www.wolsteincenter.com](http://www.wolsteincenter.com)

### Wolstein Center Administration

Executive Director	Jennifer Kelly	(216) 687-5460
Assistant Manager, Ticket Services	Joe Sarog	(216) 687-5498
Manager, Arena Operations	Gus Kanakis	(216) 687-5467
Manager, Sales	Michelle Schilling	(216) 687-5007
Manager, Fiscal	Nicole Taylor	(216) 687-5572
Marketing & Communications	Jimmy Davis	(216) 687-5499
Manager, Event Services	Melanie Snodell	(216) 687-5081
Catering Manager - Chartwells	Dan Miller	(216) 687-5064

### Directions:

#### **I-71 South and I-90 West**

Exit at Prospect Avenue, turn right and proceed west for two blocks

#### **I-90 East, I-71 and I-77 North**

Exit at East 22nd Street, turn left at the end of the ramp and proceed north for two blocks

#### **From Airport**

Take I-71 North to I-90 East. Exit at 172A East 9th Street turn right on to Carnegie Ave, Turn left onto East 18th Street, Than right onto Prospect Avenue

### Parking

The South Garage operated by Cleveland State University's Parking Services, offers new clean safe state of the art parking for up to 623 vehicles. The garage is located on East 21st street between Carnegie and Prospect. Special event parking rates will be posted.

#### **Parking for Disabled**

During Wolstein events, parkers with state issued disabled logo license plates, placards, or hang-tags, are directed to park in the access drive on the north side of the Wolstein Center. The drive is accessed from Prospect Avenue. This area has 26 parking spaces.

#### **Tour Parking**

Wolstein Center has parking available on the loading dock for a combination of 7 buses, 8 trucks, 25 Cars, If additional space is needed arrangements can be made.



**Events will be scheduled at the Wolstein Center according to the following priority:**

1. University Commencements
2. Conference home games of the University's intercollegiate Division 1 men's and women's basketball teams [a]
3. External revenue-generating events
4. Non-conference home games of the University's intercollegiate Division 1 men's and women's basketball teams
5. Other University events and activities
6. Scheduled basketball practice sessions for University's intercollegiate Division 1 men's and women's basketball teams and/or visiting teams on non-game days between September 1 and March 31 each year [b]
7. Summer basketball camps sponsored by Athletic Department.

### BOOKING PROCESS

**First Hold** - Requests for tentative date(s) that are made inside twelve (12) months of the event are held for two (2) months, after which time the Center's management reserves the right to request the date to book another event on the date(s) being held, with notification to the potential lessee.

**Second Hold** - Facility and date(s) reserved on a second hold are held pending execution of a contract or the release of the first hold dates. In the event the first hold dates are released, second hold dates receive first hold status upon notification to the second party.

**Hold Sequences**- When two (2) potential lessees are vying for the same act, the promoter who signs the act receives the contract for the date(s) regardless of the hold sequence.

**Confirmed**- The Center is considered booked and dates are considered confirmed only upon execution of a Wolstein Center lease agreement, including appropriate deposit, by the event sponsor and the Center's General Manager or his/her designee specifying all details of the commitment.



Halsey - 2017

The Wolstein Center is a total of 315,000 Square Feet, with 11,989 Fixed seats in the bowl with 1,512 Telescopic seats that pull out from four directions. The Wolstein Center has a Viking Loge that can sit 100 comfortably on the 5th floor of the building that looks over the entire arena.

### CONCESSIONS

The Wolstein Center has 8 Concession Stands around the concourse, managed by Chartwells.

### STAGING INFORMATION

The Wolstein Center has 130 Stage Right Decks in-house to use for your staging sizes of 4'x8' with height range of 48"x74" with the max stage size of 54'x80'. We do have a ADA Ramp to use 0" to 48" if requested.

### BARRICADE

The Wolstein Center has 80 feet of non blow through Barricade for use for your show, blow thru Barricade can be rented if wanted for your event.

### RIGGING

The Rigging Capacity of the Wolstein Center is 400,000 pounds with a roof truss of 59 feet, rigging steel of 69 feet.

### LIGHTING

The Wolstein Center has four Gladiator II 2500 Watt / Four Lycian Superstar Spotlights, The House Lights is Incandescent Par 64 1000 Watt, we offer Sports lighting of 188 1000 Watt HID and 64 400 Watt HID Theatrical Dimming System.

### POWER

Stage Left: 2 @ 400 amp 3 phase / 2 @ 200 amp 3 phase  
 Stage Right: 2 @ 400 amp 3 phase / 2 @ 200 amp 3 phase  
 Shore Power 2 @ 200 Amp 3 Phase / 1 @ 60 amp 3 Phase





<b>Meeting Rooms:</b>	2 Ballrooms located in the Conference Center; can be made into 3 VIP Loge can be used for private meeting rooms
<b>Communications:</b>	Standard LAN Telephone Lines, ISDN Lines and Internet Service Cost is \$175.00 per phone line/connection
<b>Pipe and Drapes:</b>	Pipe and Drape is available in 3' , 8' , 12' or 16'; colors included white, black, hunter green and royal blue
<b>In House Labor Staffing:</b>	I.A.T.S.E Local 27 Stagehand I.A.T.S.E Local 883 Wardrobe I.A.T.S.E Local 756 Ticket Sellers
<b>Audio/Visual Equipment:</b>	1 : 1500 Lumens Projector 2 : 4000 Lumens Projectors 2 : 5000 Lumens Projectors 2 : 15' x 20' Projection Screens
<b>Sound Equipment:</b>	Yamaha OV96 BSS London Blu audio processing CD, MD, Computer Playback Portable Audio System
<b>Box Office:</b>	Veritix Ticketing System Main Box Office/Advance Sales (located at Annex) 2 Satellite/Day of Show Box Office 4 Ticket Widows at each



### IATSE Work Rules:

- All calls are at a four (4) hour minimum.
- Meal break at 5 hours – break for 1 hour(walk away break) or feed(30 minutes)
- Meal penalty of time and half if no meal break is given.
- Show calls start 30 minutes before show time
- Time and Half over 40 hours - I.E. No time and half after 8 hours
- Load outs are straight time hours, minimum 4 hours – I.E. No time and half after midnight
- Load out during show with deck crew – 1 additional hour of pay. Loaders must be called back early to load the trailer
- Coffee break is flexible but normally is given 2 hours into load in
- Truck Loaders stay in the truck
- Fork operators stay on the fork lift
- Union Steward is non-working for calls over 6 stagehands
- Riggers cannot become stagehands after rigging is completed
- General guidelines for rigging calls
  - 2 up 1 down for shows up to 15 points
  - 4 up 2 down for shows up to 30 points
  - 6 up 3 down for shows up to 45 points
  - 2 up 1 down till show is floating or at trim



### Show Calls:

- Show Calls will be at a flat ShowPay rate for a four (4) hour minimum; any hours worked beyond the four (4) hour call will be at the regular Stagehand rate.
- Deck Hands used as Loaders during a Show Call will be paid an additional hour.
- Show Calls which go beyond the minimum four (4) hour Show Call will be at an additional hour.

### Rigging Equipment:

The Wolstein Center has on hand the following rigging equipment:

- Five (5) CM Half-Ton Inverted Chain Motors
- Eleven (11) 12" Thomas Truss
- Miscellaneous Rigging Equipment

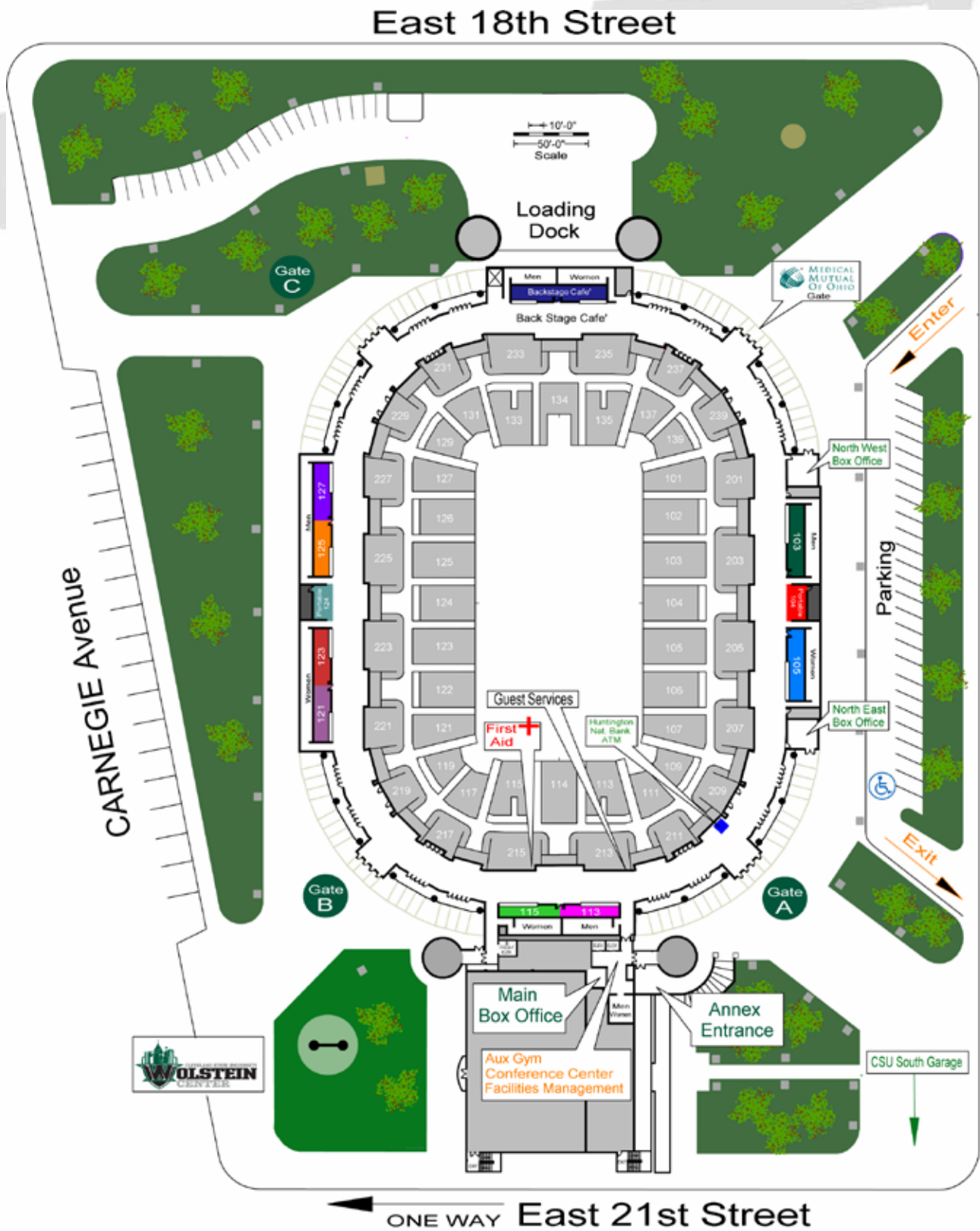
### Winch Bitten System:

The house rigging system includes eleven (11) winch battens of various sizes and locations. These battens may be used dependent on arena configurations related to hanging banners and sign-age, scenery, drapery, lighting fixtures, etc. Each batten travels to a working height above floor level for ease of loading. The configuration of these battens provides for the creation of a proscenium stage environment utilizing the house drapery (see Appendix 7). Speaker Cluster System (See Appendix 8)

\*\* The building rigging system is comprised primarily of a structural rigging grid from which all points must be hung. Do NOT plan to hang from roof trusses or catwalk steel. The grid is constructed of a double wide W-10 beam with plate steel forming the platform. Wrapping of the point often requires two (2) Riggers due to the depth of the rigging beam. The majority of the grid has an overhead safety cable system for attachment of personnel harnesses. Rigging within the Wolstein Center is performed by personnel of I.A.T.S.E. Local 27.











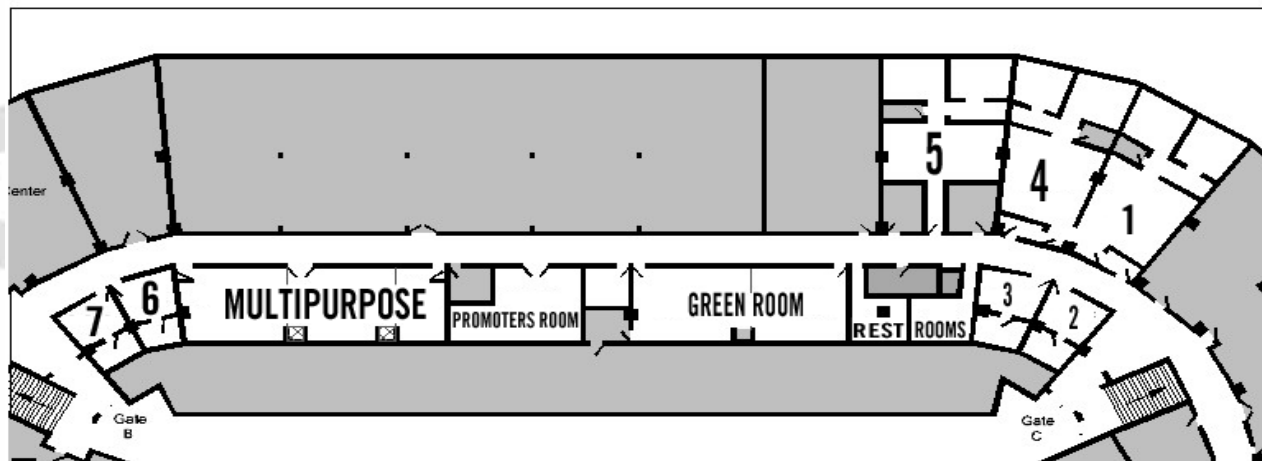
Miranda Lambert - 2018

The arena bowl: 112 ft. x 212 ft. for 23,744 square feet of floor space.

In addition to upper and lower bowl fixed seating, there are 1,512 seats that telescope onto the floor from four (4) directions, giving the facility 13,610 upholstered, theater-style seats.

Building access is via a double wide truck door located 20 ft. below street grade. The exterior loading area, immediately West of the facility, provides ample parking for trucks and tour buses; as well as a semi turnaround “bull nose”.

Trucks/vehicles may be driven onto the arena floor via access directly off the loading dock area. There is over 10,000 square feet of storage space directly adjacent to the arena.



Dressing Room #1: 19'x19'

Dressing Room #2: 10'x14'

Dressing Room #3: 10'x14'

Dressing Room #4: 19'x19'

Dressing Room #5: 11'x27'

Dressing Room #6: 9'x14'

Dressing Room #7: 9'x14'

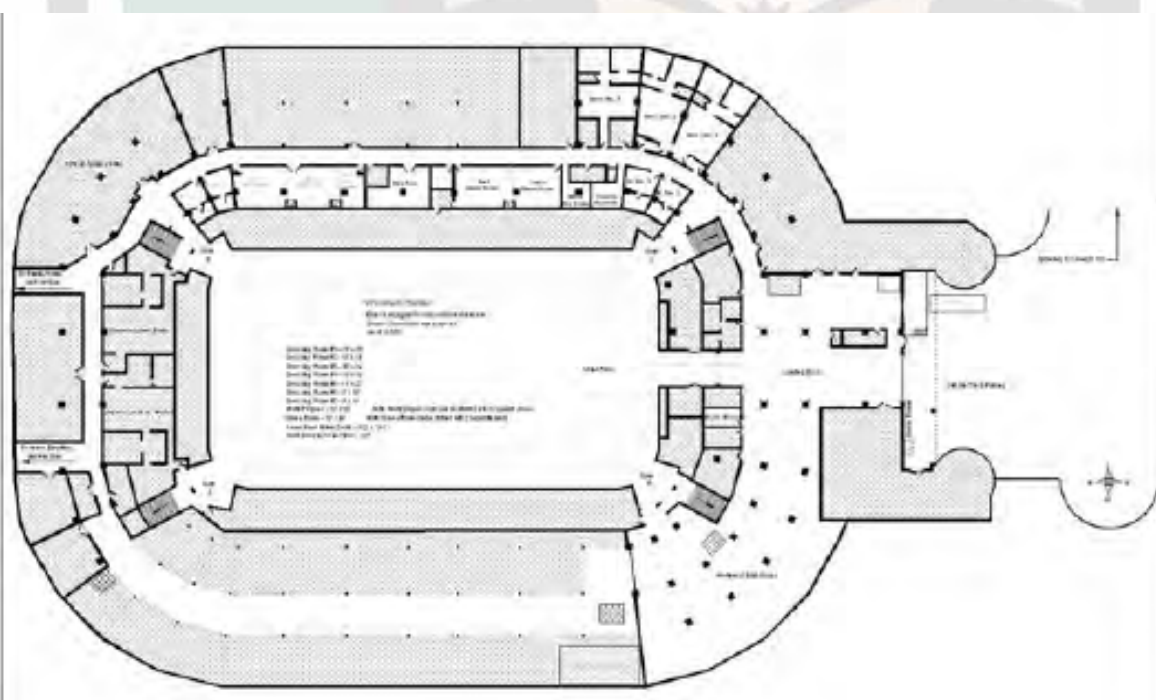
Multi-Purpose: 19'x65'

Green Room: 19'x49'

Arena Floor Minus Seats: 112'x121'

Dock Door to Arena Floor: 115'

**Note:** Multi-Purpose room can be divided into 3 separate areas; Green Room can be divided into 2 separate areas



The Cleveland State Wolstein Center in-house Marketing Department has a successful record of marketing many different events throughout the years. Our personal “hands on” approach and attention to detail will meet all of your marketing, advertising and public relations needs.

### MARKETING/ADVERTISING

- \* Develop a comprehensive marketing campaign utilizing local TV, radio, and print.
- \* The Client will have 100% input into the campaign
- \* Manage media placement for events
- \* Organize current media rate card information for Cleveland and surrounding areas.
- \* Compile complete demographic information on Northeast Ohio.
- \* Free inclusion in website, indoor messaging center, monthly mailer, and campus advertising
- \* Complete event recap and marketing settlement
- \* Perspective client list for possible additional event sponsorships
- \* Oversee event marketing budget
- \* Group Discounts available to clubs, schools, businesses and other groups.
- \* Arrange pre-show dinners/parties, meet and greets and Private clinics.

We can also assist events by designing strategies to drive ticket sales through the Arena, by incorporating various components: Sweepstakes, premiums, point-of-purchase sales displays, and incentive programs.

### MEDIA RELATIONS

- \* Complete list of all Media Outlets throughout Northeast Ohio
- \* Press Release/Media Advisories Creation
- \* Faxing, Mailing or Email Capabilities
- \* Personalizes follow-up phone campaign

### WOLSTEIN CENTER MARKETED EVENTS

#### \* FAMILY SHOWS:

Cirque du Soleil “OVO”, Jim Gaffigan, Jeff Dunham, Rugrats, power rangers, barney, veggietales, rocket power, monster trucks, professional bull riders, lipizzaner stallions

#### CONCERTS

Ed Sheeran, Chris Tomlin, Winter Jam, Jay Z, American Idols, Justin Moore, Vince Gill, Fall Out Boy, Sam Smith, Korn, Nine Inch Nails.





**Facility Size:** 315,000 sq. ft.

**Premium Seating:** 10 Seat VIP  
100 Seat Party Suite

**Scoreboard:** TransLux - 4 Corner Video / Amber Message Centers

**Amenities:** 8 Concession Stands  
8 Day of Show Box Office Windows  
6 Room Conference Center  
VIP Suite/Loge  
VIP Backstage/Cafe  
Practice Gymnasium

**Staging Info:** Brand: Stage Right  
Deck Size: 4'x8'/130 Decks in House  
Height Range: 48" x 74"  
Max Stage Size: 56' x 80'  
Step Units: 4 Large (48" to 74")/4 Small (16" to 24")  
ADA Ramp: Stage Right 0" to 48"  
Barricade: 80' of Stage Right Platforms

**Rigging:** Capacity: 400,000 lbs.  
Roof Truss: 59'  
Rigging Steel: 69'

**Lighting Services:**

Spotlights: 4 Gladiator II 2500 Watt / 4 Lycian Superstar  
House Lights: Incandescent Par 64 1000 Watt  
Sports Lights: 162 @ 1000 Watt HID / 64 @ 400 Watt HID  
Theatrical Dimming System

**Show Power:**

Stage Left: 2 @ 400 amp 3 phase / 2 @ 200 amp 3 phase 208v  
Stage Right: 2 @ 400 amp 3 phase / 2 @ 200 amp 3 phase 208v  
Shore/Dock Powe: 2 @ 200 amp 3 phase / 1 @ 60 amp 3 phase 208v /

**Arena Dimensions:**

Arena Floor: 112 ft. x 212 ft./23,744 sq.ft.  
Storage Space: 40,000 sq. ft.  
Conference Center: 7,800 sq. ft.  
VIP Loge: 1,800 sq. ft.

**Loading Dock Capabilities:**

Trucks/Buses: 8 Trucks / 7 Buses  
Vehicles: 25 Automobiles  
Load In / Out: 2 Trucks at a time with Truck Ramps

**Dressing Rooms:**

4 Star dressing rooms complete with individual restrooms and showers  
3 larger team/band dressing rooms with multiple restrooms and showers

**Dressing Room Furniture:**

Couches, love seat and arm chairs are available  
Coffee and end tables with floor and table lamps are available  
Additional furniture may be ordered



Machine Gun Kelly - 2017



Rigging (Grid Pattern):

Low Steel: 59'

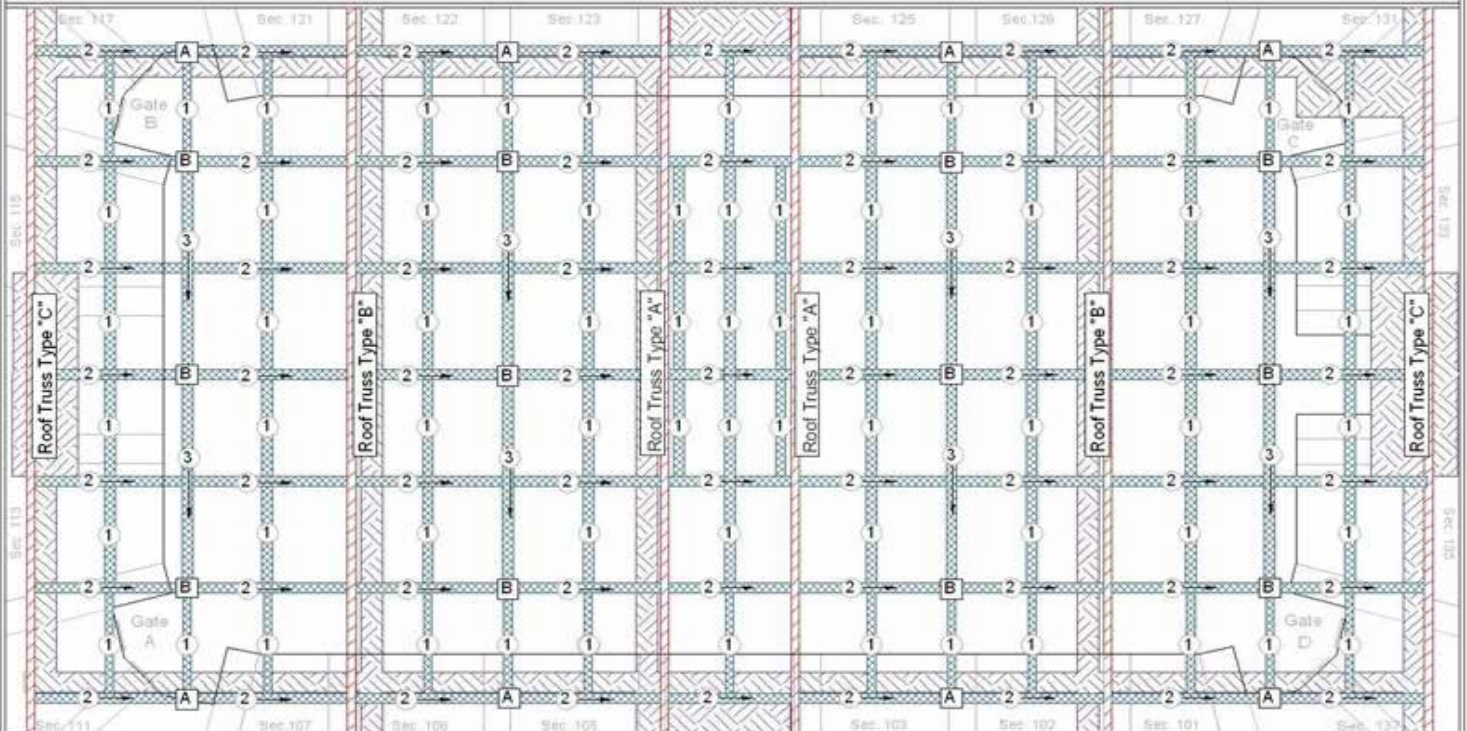
High Steel: 69'

### Guidelines for Maximum Hanging Load

- Max Working Load for 1s 15000 Pounds
- Max Working Load for 2s 30000 Pounds including loads coming to 1 from 2
- Max Working Load for 3s 30000 Pounds including loads coming to 1 from 3
- Max Working Load for hanger type 1A 30000 Pounds
- Max Working Load for hanger type 1B 40000 Pounds

-Sum of all loads hanging from anywhere on the roof structure from all sources described above shall not exceed 80000 pounds for any Roof Truss A or B and 40000 pounds for Roof Truss C

-Rigging loads bridled more than 45 deg. shall be reduced to 70% of the loads listed above



### Arena Rigging Steel Top View

DWN by GVP Revised 110505 Rigging Steel v.4

Notes: ■ Roof Truss  
■ Rigging Steel  
■ Catwalk





The Wolstein Center has a unique setup with the The Gerald H. Gordon Conference Pavilion attached to the building with 2 Large Ballroom Spaces and a Loge overlooking the Arena.

The Rooms are located on the 4th floor of the conference pavilion. The Atrium, East Wing and West Wing make up the over 7,800 square foot area and can be configured into smaller, rooms for breakout sessions or working groups. The Rooms are ideal for a conference of 300 guests, but are flexible to serve even a trade show, banquet, or workshop.

	Square Feet	Theater	Classroom	Banquet	Reception
East Wing -	3520	400	150	250	450
West Wing -	4356	450	250	300	500
Viking Loge -	1800	200	80	100	200

