

## TABLE OF CONTENTS

|   |       |
|---|-------|
| Welcome                                 | 4     |
| Arena Contact Information               | 5     |
| Technical Quick Guide                   | 6     |
| Arena Configurations/Seating Capacities | 7-15  |
| Floor Dimensions                        | 16-19 |
| Littlejohn Facility Map                 | 20    |
| Building Information                    | 21    |
| Rigging                                 | 22    |
| Rigging Diagram                         | 23    |
| Parking/Load-In                         | 24    |
| Level 1                                 | 25    |
| Dressing Rooms                          | 26-27 |
| Routing and Driving Directions          | 28-29 |
| Marketing Information                   | 30-31 |
| TigerPaw Productions                    | 32    |
| Off-Campus Promotion                    | 33    |
| Directions to Littlejohn                | 34    |
| Patron Parking                          | 35    |
| Equipment                               | 36    |
| Box Office Information                  | 37    |
| Lodging and Dining                      | 38-40 |
| Local Information                       | 41    |



Welcome to Littlejohn Coliseum, a leading sports and entertainment venue in the Southeast and home to the Clemson Tiger basketball programs. Serving the entire upstate SC region as well as northeast Georgia, we are a premier location for concerts and tours of every genre. Each year we host more than 150 event days and serve well over 400,000 fans.

Located on the beautiful Clemson University campus, Littlejohn Coliseum operates as a full-service, multi-use facility utilizing 170,000 square feet of useable space and hosting concerts, comedians, conferences, basketball games, family gatherings and gala events.

The 10,000 seat arena originally opened in 1968. In 2003, a \$31 million renovation was completed, improving acoustics, storage, dressing rooms, catering areas, mechanical, electrical and life safety equipment. In addition, a new roof with a rigging capacity of 120,000 pounds was installed. The size of the concourse tripled, restrooms and concession stands doubled, sight lines improved and new cushioned seats were installed throughout the building.

Littlejohn Coliseum is a promoter-friendly facility. Student employment allows us to offer low-cost labor, and our ability to co-promote provides for a wide range of cost effective deals. But don't be fooled by our low cost: every staff member is put through our intense TigerPaw Productions training. You can expect a well trained, highly qualified staff. Full-time professional marketing, booking, box-office and administrative staff are also at your service.



## LITTLEJOHN COLISEUM

Located on the gorgeous campus of Clemson University  
1 Avenue of Champions, Clemson, SC 29634

Main Administrative Office  
Office 864-656-0619  
Fax 864-656-1414

### Littlejohn Coliseum Management Team

Marty Kern  
General Manager  
Phone: 864-656-6676  
Cell: 864-207-4000  
Email: mkern@clemson.edu

Cecilia Vazquez  
Business Manager  
Phone: 864-656-4252  
Cell: 864-784-9274  
Email: mvazque@clemson.edu

Dusty Saine  
Assistant General Manager  
Phone: 864-656-5006  
Cell: 864-710-2445  
Email: dustys@clemson.edu

Zach Kerns  
Director of Operations  
Phone: 864-656-6252  
Cell: 864-207-6420  
Email: zachark@clemson.edu

Alanna Waldrop  
Box Office Manager  
Phone: 864-656-6675  
Cell: 864-245-7669  
Email: alanna@clemson.edu



Littlejohn Coliseum  
1 Ave of Champions  
Clemson, SC 29634

Built 1968  
Renovated 2003

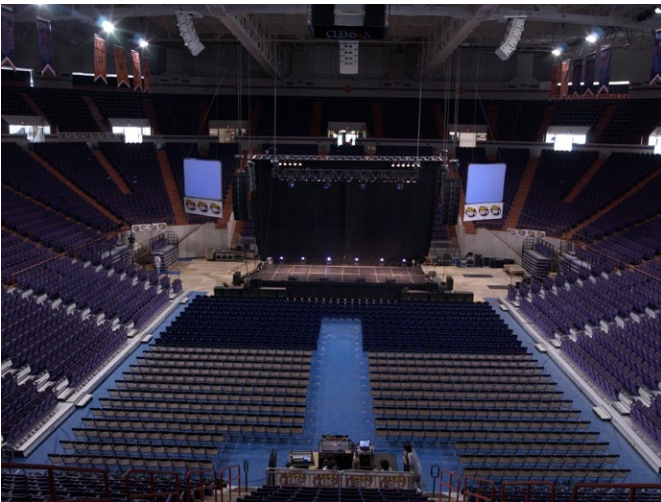
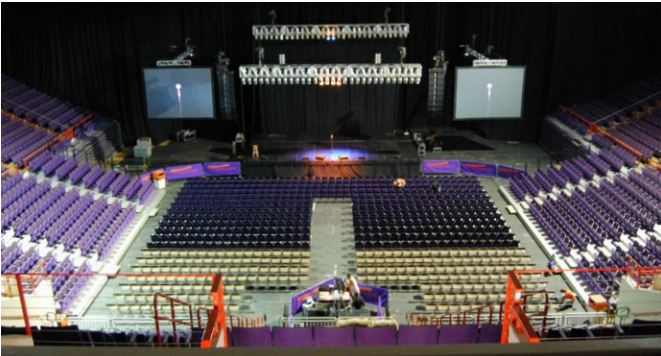
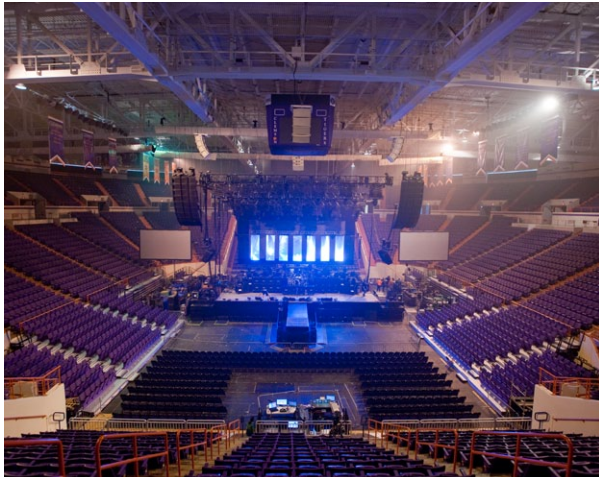
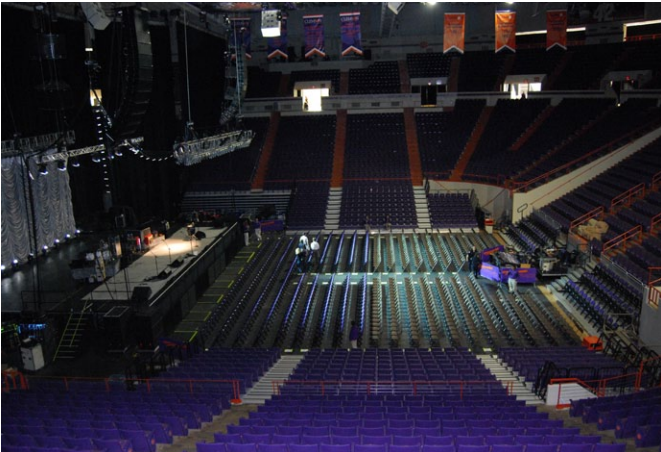
|   |  |  |   |
|---|--|--|---|
| <b>Operations Manager:</b><br>(rigging, power, hands)   | Zach Kerns<br><i>zachark@clemson.edu</i><br>864-656-6252 | <b>Security Contact:</b><br>(Police, EMS, T-shirt) | Dusty Saine<br><i>dustys@clemson.edu</i><br>864-656-5006      |
| <b>Front of House Staff:</b><br>(ushers, ticket takers) | Dusty Saine<br><i>dustys@clemson.edu</i><br>864-656-5006 | <b>Catering Contact:</b><br>(Merchandise)          | Cecilia Vazquez<br><i>mvazque@clemson.edu</i><br>864-656-4252 |
| <b>Production office Numbers:</b>                       | 1. 864-656-0967  | 2. 864-656-0250                                    | 3. 864-656-2147   |
| <b>Floor Dimensions</b>                                 | No Risers<br>Risers OUT                                  | 120'L x 110'W<br>120'L x 68' W                     |   |

Permanent Basketball Court Covered with a vinyl floor cover and 3/4" plywood  
No Ice or Dirt

|                    |  |                   |   |
|--------------------|--|-------------------|---|
| <b>Staging</b>     | Stage Right<br>Flexible sizes and heights<br>80' of toe rail<br>96' of safety handrails<br>2 stair sets<br>140' of black stage skirt<br>Purple padded chairs   | <b>Barricade</b>  | Sico free standing and bike rack  |
|                    |  | <b>Forklift</b>   | 1CAT-Propane powered<br>5000lb w/side shift and 6' extensions<br>(Forklift can only travel on double plywood)<br>Additional forklifts can be rented if needed |
|                    |  | <b>Spotlights</b> | 2- Lycian 1275 with the ability to move<br>for an East/West stage configuration.  |
| <b>Power</b>       | 2- 450 amps (208/120) 3 phase<br>2- 400 amps (208/120) 3 phase<br>1- 200 amps (208/120) 3 phase<br>1- 200 amps (208/120) 3 phase (CATWALK)   |                   |   |
| <b>Rigging</b>     | Max rigging capacity is 120,000 lbs. The building is equipped with a weight supporting net for riggers to walk on. All rigging plots should be approved in advance of rigging. The area's high steel is at 74 feet with the low steel being the catwalk at 64 feet. All riggers are on 4 hour minimums. Upper steel beams are on 7'6" centers and are accessible with beam clamps. |                   |   |
| <b>Load in</b>     | Show load-in is located on the Avenue of Champions on the Southside of our building. There is one loading area through a 14' 6" H x 12' W roll-up door. All gear has to be ramped to floor or across to the stage. There are NO loading docks.   |                   |   |
| <b>Parking</b>     | Show parking is located on the Avenue of Champions on the Southside of the building. This (Bus/Truck) secure parking area is directly beside the building about 100 ft. from the backstage door. <b>No shore power.</b>  |                   |   |
| <b>Pyrotechnic</b> | A Clemson University and State of South Carolina (\$300) permit is required for any and all pyrotechnics used inside or anywhere around the building. South Carolina state law demands that a South Carolina licensed pyrotechnic technician be present whenever pyrotechnics are used at Littlejohn Coliseum. There will be a designated room used for storing pyrotechnics.      |                   |   |
| <b>Intercom</b>    | Production Intercom brand system runs to spotlight platform and various other locations throughout the building. We have 8 belt packs and 8 headsets.  |                   |   |

# ARENA CONFIGURATIONS

Littlejohn Coliseum truly is a flexible arena. We are willing to work with promoters, agents, talent buyers and anyone else bringing a show to Littlejohn looking for the right fit for their event. Below are some examples of various configurations we have done in the past. If you have a different idea of how you would like to set up your show, let us know, and we will help facilitate it.



# NORTH ENDSTAGE 180°

214 = Section Number  
 (113) = Section Quantity

- FLOOR - 620
- RISERS - 487
- LOWER - 2480
- UPPER - 2204
- GA - 750 +/-
- TOTAL - 5791**



NORTH ENDSTAGE 180

# NORTH ENDSTAGE 270°

**214 = Section Number**  
 (113) = Section Quantity

- FLOOR - 620
- RISERS - 811
- LOWER - 3175
- UPPER - 2854
- GA - 750 +/-
- TOTAL - 7460**



# EAST ENDSTAGE 150°

214 = Section Number  
 (113) = Section Quantity

- FLOOR - 260
- RISERS - 415
- LOWER - 1773
- UPPER - 1498
- GA - 750 +/-
- TOTAL - 3946**





# EAST ENDSTAGE 180°

**214 = Section Number**  
 (113) = Section Quantity

- FLOOR - 620
- RISERS - 475
- LOWER - 2169
- UPPER - 2079
- GA - 750 +/-
- TOTAL - 5343**



# 180° COMEDIAN SET

214 = Section Number  
 (113) = Section Quantity

- FLOOR - 884
- RISERS - 703
- LOWER - 2718
- UPPER - 2453
- TOTAL - 6758**



180 COMEDIAN SET

# 270° COMEDIAN SET

214 = Section Number  
 (113) = Section Quantity

- FLOOR - 884
- RISERS - 811
- LOWER - 3175
- UPPER - 2854
- TOTAL - 7724**



# 360° IN THE ROUND

214 = Section Number  
(113) = Section Quantity

- FLOOR - 720
  - RISERS - 950
  - LOWER - 4,536
  - UPPER - 4,237
- TOTAL - 10,443**



# SCALED SET

214 = Section Number  
 (113) = Section Quantity

- FLOOR - 700
- RISERS - 379
- LOWER - 1700
- UPPER - 981
- TOTAL - 3560**



## THEATER AT LITTLEJOHN COLISEUM

The theater at Littlejohn Coliseum was created due to the demand for smaller, more intimate shows. In order to fill this void we created a way to transform a 10,000 seat basketball arena into a 2000-6000 seat theatrical space. The transformation starts with a large curtaining system, better acoustics and additional lighting components. All of these components aid in creating a totally new venue with its own unique identity within the entertainment industry.



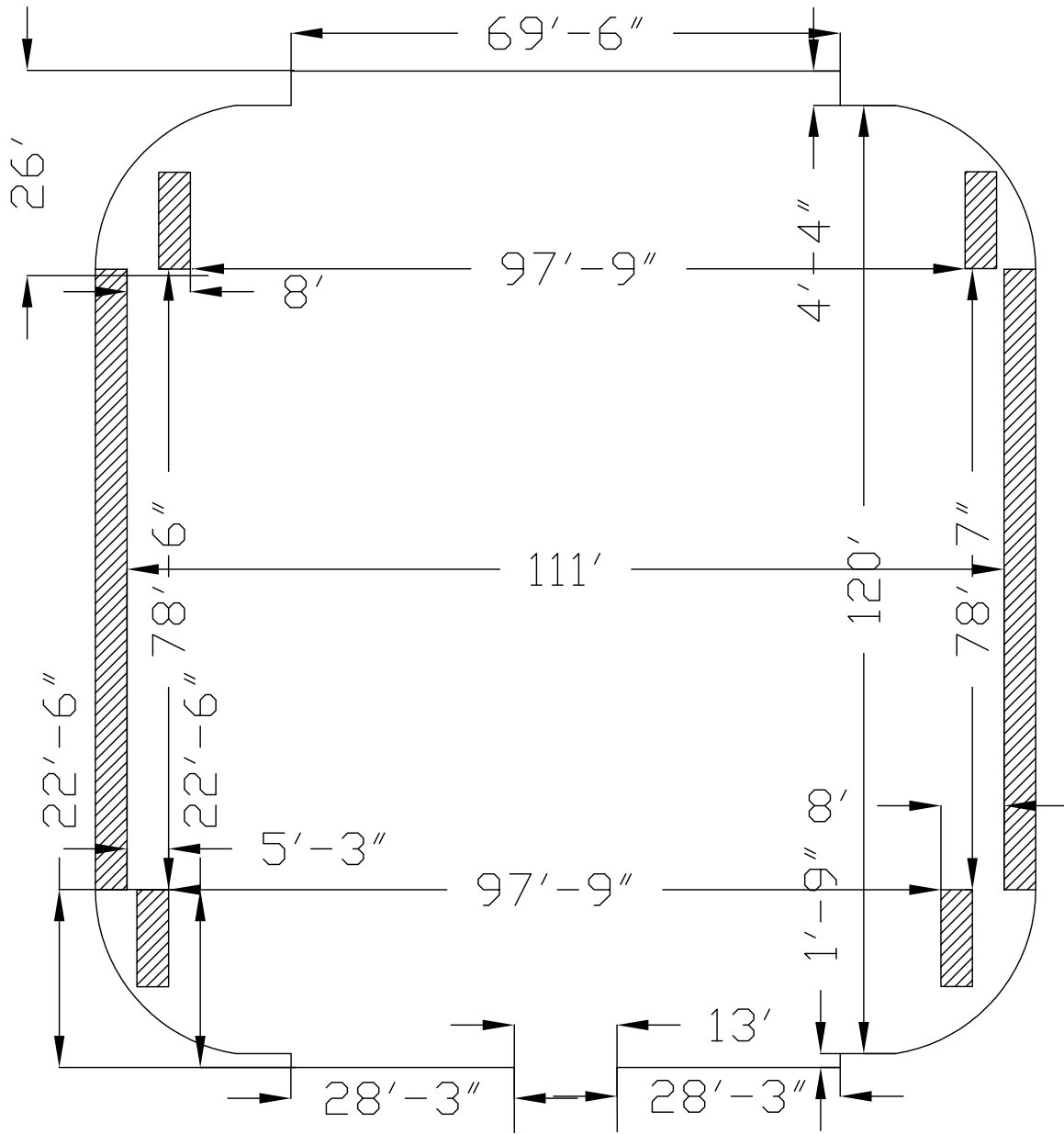
# THEATER SET

214 = Section Number  
 (113) = Section Quantity

- FLOOR - 620
- RISERS - 595
- LOWER - 2090
- UPPER - 1786
- GA - 750 +/-
- TOTAL - 5091**

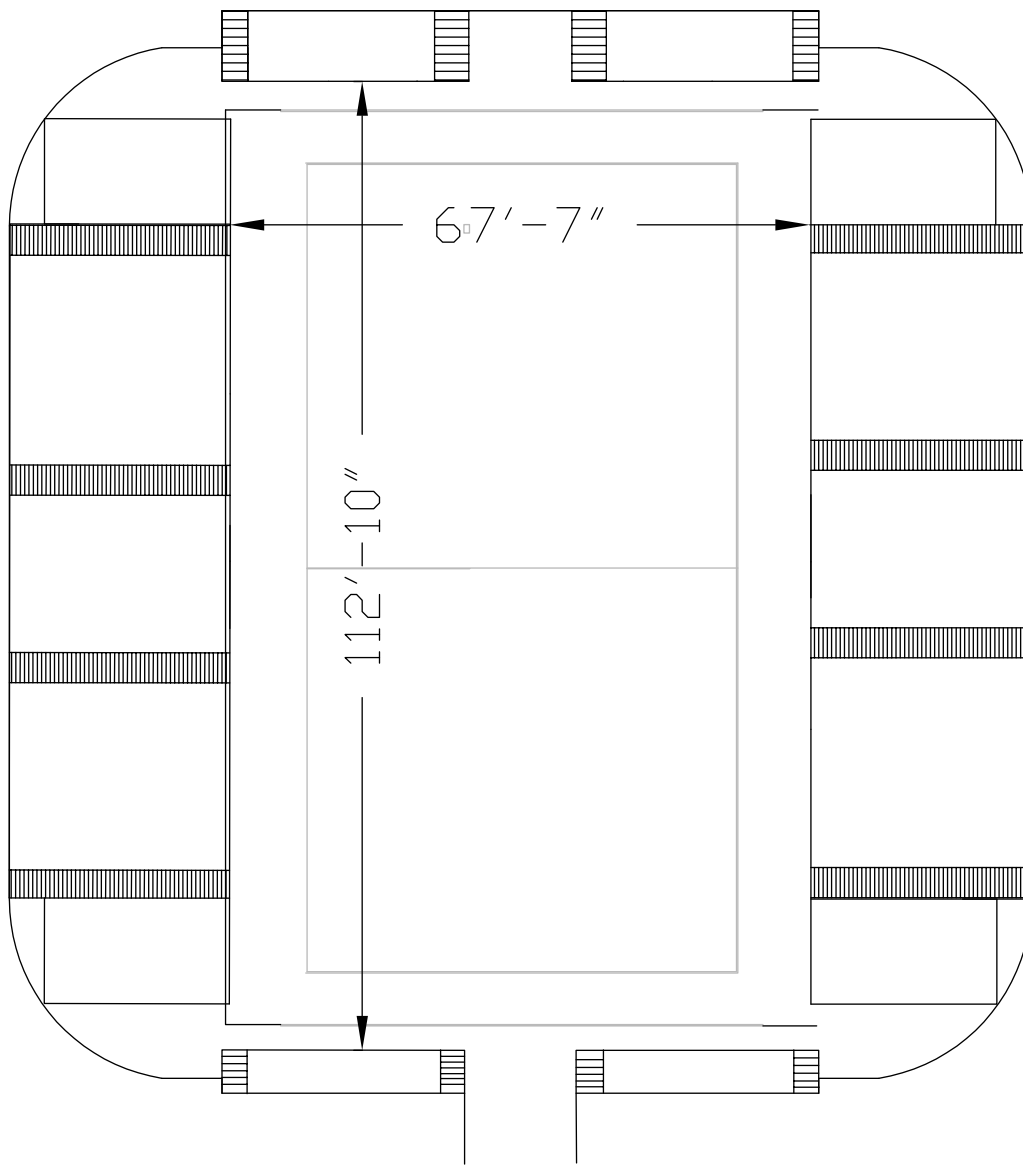


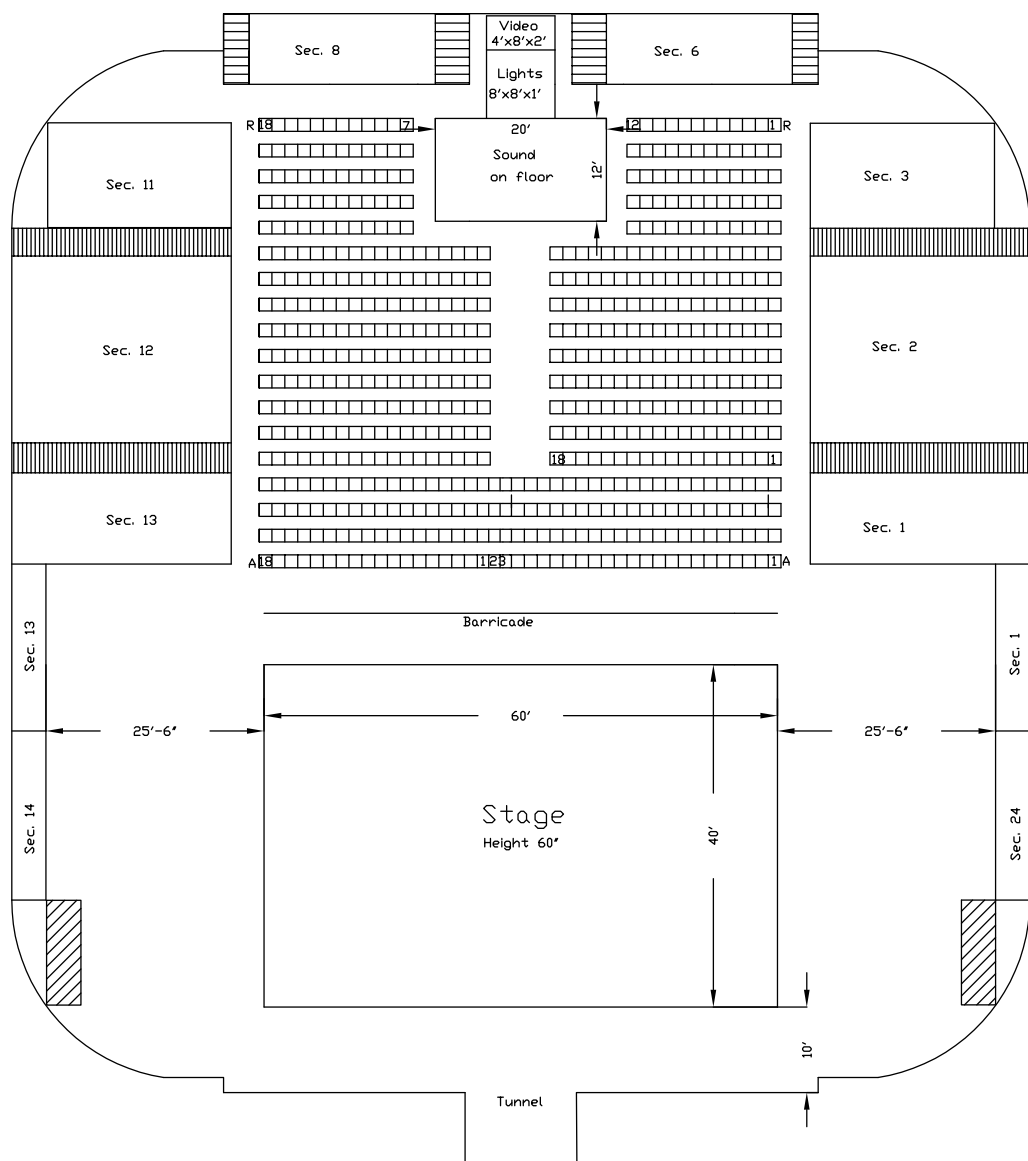
# FLOOR DIMENSIONS - RISERS IN



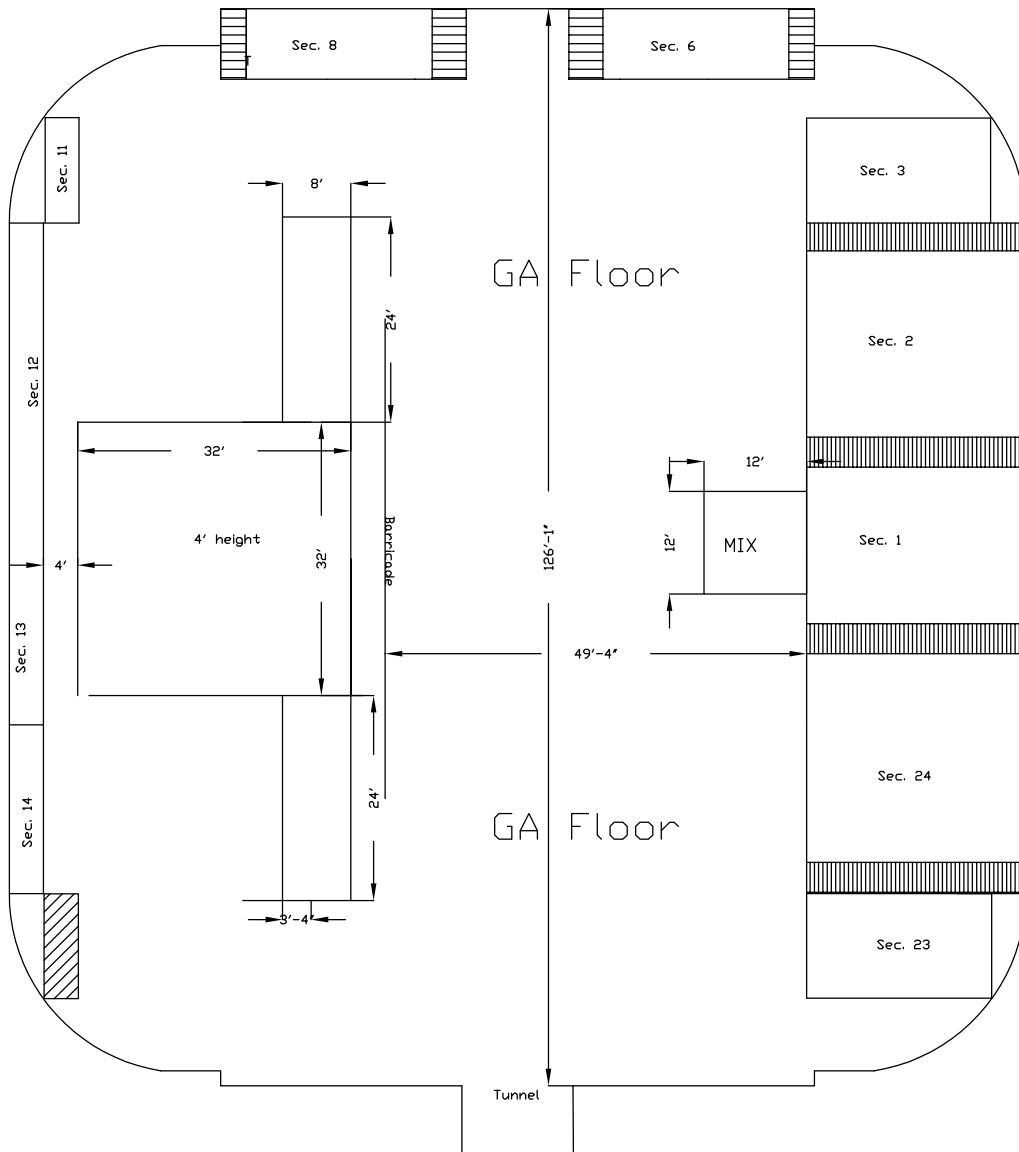


# FLOOR DIMENSIONS - RISERS OUT





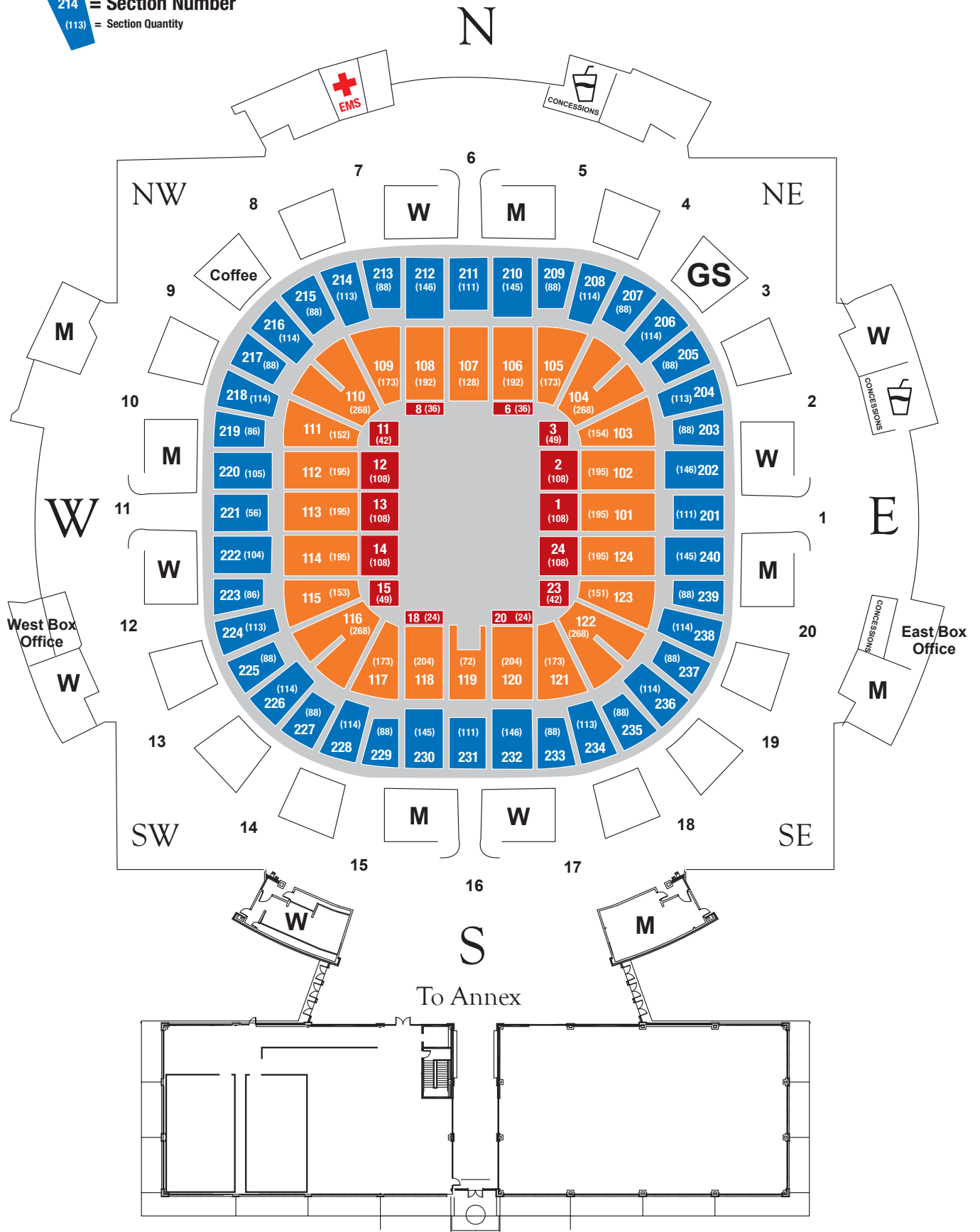
# FLOOR DIMENSIONS - ENDSTAGE EAST



# LITTLEJOHN FACILITY MAP

**214 = Section Number**  
**(113) = Section Quantity**

LITTLEJOHN COLISEUM MAP



## BUILDING INFORMATION

1st Level - Load-in, Operations, Production Office

2nd Level - Dressing Rooms and Administration Offices

3rd Level - Box Offices, Merchandise, Concessions, Show Catering and Concourse Level

### Floor Details

Permanent maple wood basketball court

### Cover

- Tarp on arena floor for chairs, tables and foot traffic
- Tarp and single layer of plywood for stage, and all carts with wheels
- Tarp and double layer of plywood for forklift or other heavy equipment

### Show Power

Disconnects:

- (1) 400 amp (208/120) 3 phase on dedicated transformer
- (1) 400 amp (208/120) 3 phase
- (1) 200 amp (208/120) 3 phase
- (2) 450 amp (208/120) 3 phase
- (1) 200 amp (208/120) 3 phase (Catwalk)

Power location is 22' from arena floor.

\*In-house electrician must make all electrical connections.

### TV Truck Area-Northwest Corner

(3) 200 amp disconnects with cam lock connections

### Pyrotechnics

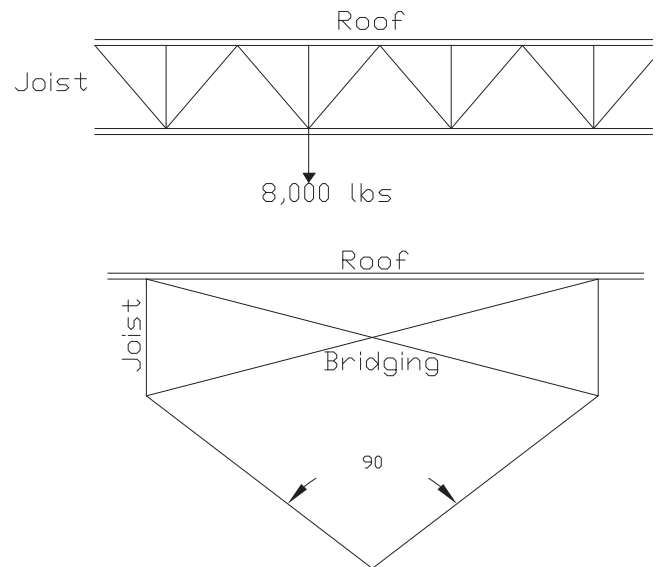
All pyrotechnics must be approved by Coliseum Administration.

Article 71-8312 of the state Fire Marshal's regulations require \$300.00 permit to stage indoor pyrotechnics at least 15 days prior to the performance. Less than 15 days the fee is \$600.00. All indoor pyrotechnic events shall be approved by the State Fire Marshal's office.

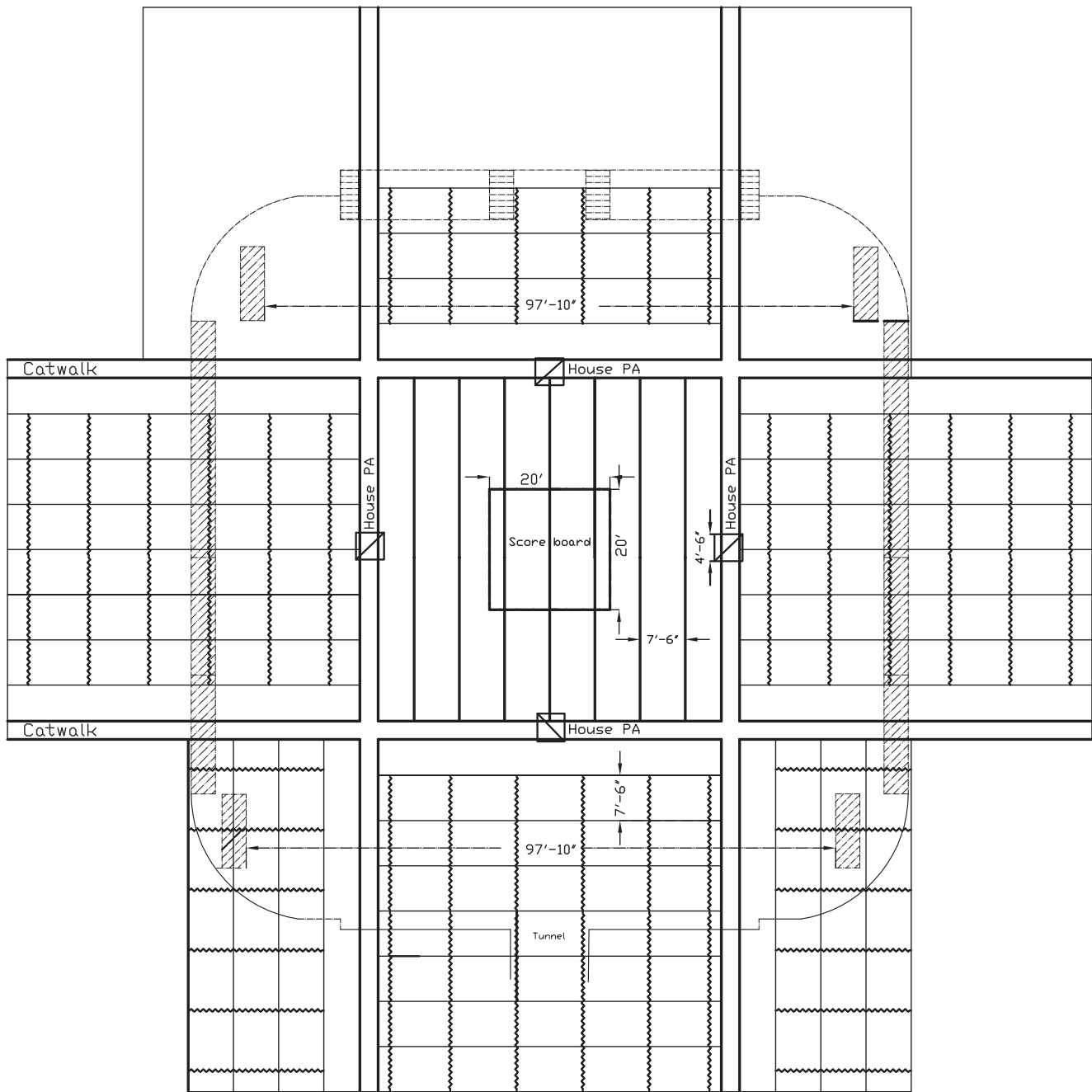
## RIGGING

Littlejohn Coliseum has a state of the art weight bearing rigging net. When rigging points in Littlejohn the riggers will walk on net to access all load bearing beams and joist. All riggers are required to wear a harness and remain attached to our fall protection lines at all times. The space between the beams and joist span 7'6". Our catwalk is also a rigging assessable. Our scoreboard is open air and allows for a few points in hang through if needed.

- The total rigging load for either end stage or center stage shall not exceed 120,000 lbs.
- Maximum load on a roof joist is 8,000 lbs. at any panel point (see diagram) of the joist. A panel point is the intersection of diagonals/verticals with the bottom chord of the joist. This load may be composed of several smaller loads whose sum does not exceed 8,000 lbs. Load points between panel points on the joist shall not exceed 500 lbs. but may be bridled parallel to the joist from the closet panel point
- Maximum load on a beam in the center bay shall not exceed 20,000 lbs. except for those supporting the scoreboard: in their case the load shall not exceed 12,000lbs.
- When bridling, the sum of the incline angles of both legs shall not exceed 90 degrees (see diagram). Bridals shall be installed as close as possible to bridging.
- Load may be hung directly from main truss(catwalk). Point loads shall not exceed 20,000 lbs. and must be spaced at least 30' apart.
- Height to beam in center bay 78'
- Height to joist 76'
- Height to catwalk 64' 6"
- Height to bottom of scoreboard 54'
- Protect all joist at all rigging points with burlap or other material approved by the facility.
- All rigging lines passing through the net must be protected with a toilet flange.



# RIGGING DIAGRAM



□ House PA (Fixed Location). Height to the bottom of the PA is 54'.

## PARKING / LOAD-IN



### Show Parking

- All show parking for busses and tractor trailers is located on the Avenue of Champions.
- The street is barricaded and secured by our T-shirt security staff.

Note: No shore power.

### Load-in/Load-out

One loading/unloading area for backing a tractor trailer in the building through the tunnel (Loading Door 11'6" w x 15' h)

- NO DOCK (must ramp to the floor or across to the stage)
  - Ability to unload multiple trucks on the street.
- Total tunnel length is 230', and distance from street to stage is 295'.

Note: The permanent basketball court will be covered with plywood. NO CASES MAY BE ROLLED OFF THE PLYWOOD.

### Elevator

An oversized elevator can accommodate up to 5000 lbs. for ease of moving merchandise and other equipment to the second and third levels.





The first floor of Littlejohn Coliseum includes:

- Show power (located about 22' from the Coliseum floor)
- Pyro room (lockable room)
- Production office (26'x 30' open space set with tables and used by the tour management)
- Wardrobe Room (25'x 30' open space with the only 2 restrooms on first level)
- Operations office
- Elevator with Access to Dressing rooms and Arena concourse

All rooms can be changed to meet your shows specific requirements. Please let us know ahead of time of how you would like the rooms to be laid out.



LEVEL 1 LAYOUT

**Private star dressing rooms**

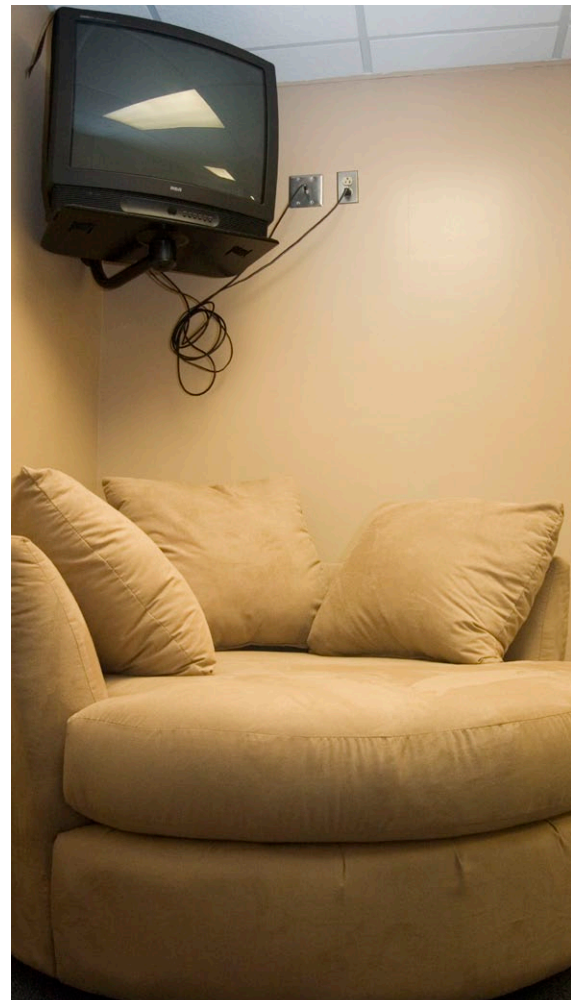
- (1) 15' x 20' with private bathroom and shower, floor length mirrors and vanity table
- (1) 12' x 20' with private bathroom and shower
- (2) 30' x 16' locker rooms with multiple toilets and showers
- (2) 11' x 13' with private bathroom and shower

Basic furniture and TVs provided in each room.

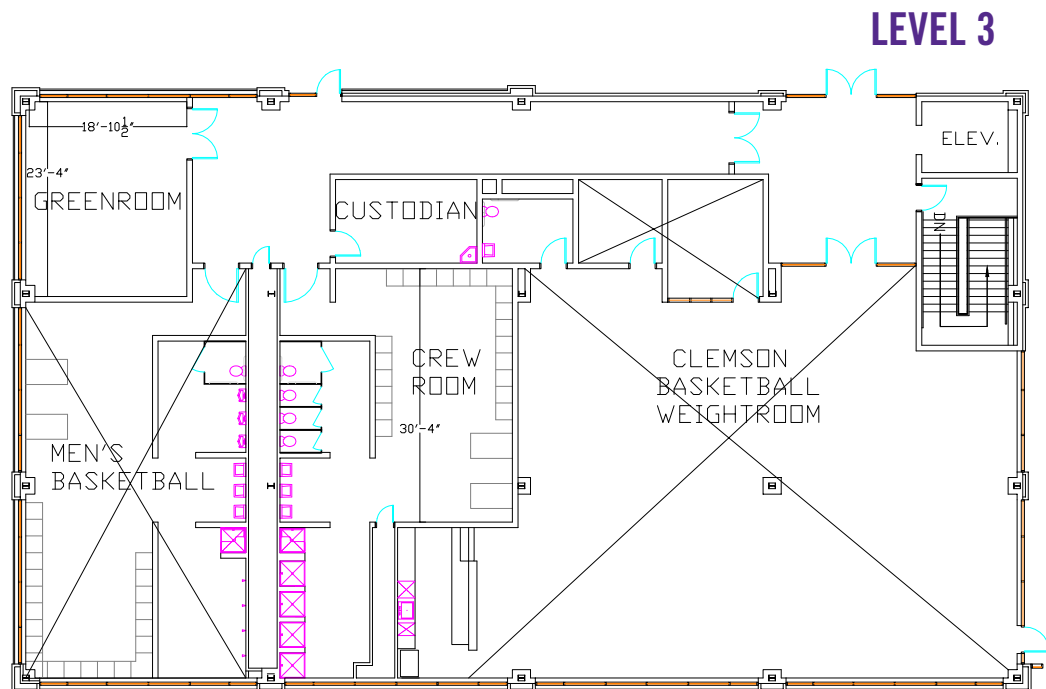
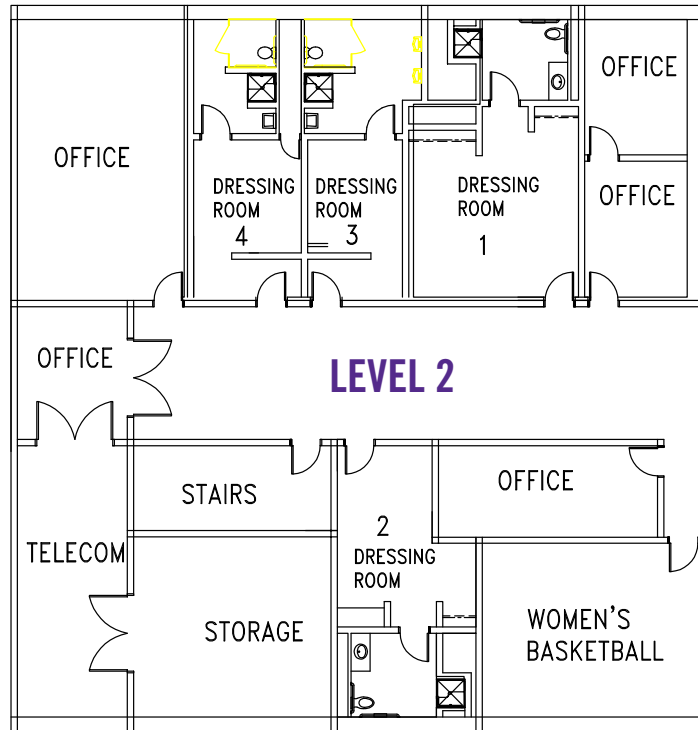
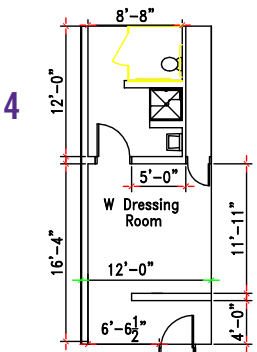
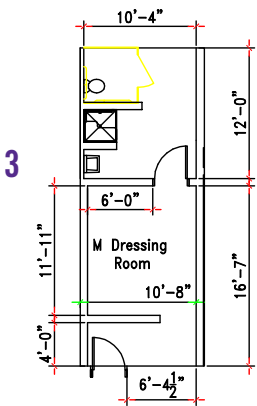
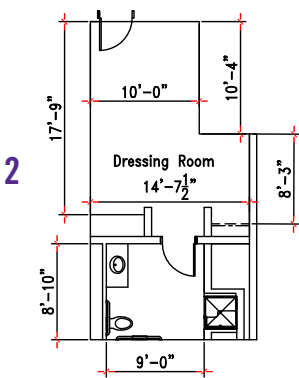
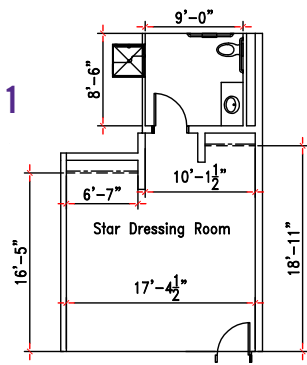
\* Additional furniture or special request should be made in advance (ie. XBOX or large screen TV)

All rooms have internet and phone connections. Also, the building is equipped with wireless internet.

\* Request for additional phone lines and hard-wired internet should be made in advance.



## LEVEL 2 DRESSING ROOMS



## THE ROUTE TO CLEMSON



Close to major cities:

| City             | Road Miles |
|------------------|------------|
| Asheville        | 80         |
| <b>Atlanta</b>   | <b>130</b> |
| Birmingham       | 270        |
| Charleston       | 230        |
| <b>Charlotte</b> | <b>130</b> |
| Chatanooga       | 230        |
| <b>Columbia</b>  | <b>125</b> |
| Greenville       | 40         |
| Jacksonville     | 425        |
| Knoxville        | 190        |
| Montgomery       | 280        |
| Raleigh          | 260        |
| Savannah         | 300        |
| Spartanburg      | 70         |
| Tallahassee      | 400        |

## DIRECTIONS

Getting to Littlejohn Coliseum is an easy trip with major interstates nearby. Once you're here, our convenient and secure show parking puts you directly backstage.

### From Atlanta, GA – 130 miles

- Take I-85 N toward Charlotte, NC
- Take exit 19B to US-76 W to Clemson
- Turn left on to Pearman Blvd. (first left after passing National Guard)
- Littlejohn Coliseum will be on the right

### From Columbia, SC – 125 miles

- Take I-26 W toward Spartanburg, SC
- Take exit I-385 W toward Greenville, SC
- Exit I-85 S toward Atlanta, GA
- Take exit 19B to US-76 W to Clemson
- Turn left on to Pearman Blvd. (first left after passing National Guard)
- Littlejohn Coliseum will be on the right

### From Asheville, NC – 80 miles

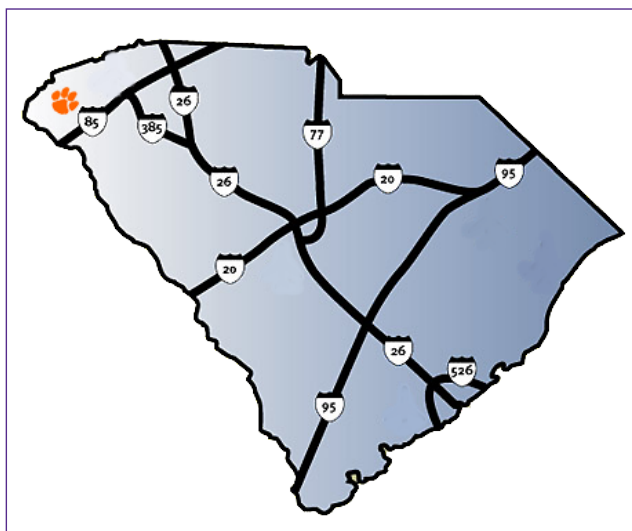
- Take US-74 W to US-23 S
- Take I-240 S to I-40 E toward Winston-Salem, NC
- Exit I-26 E toward Charleston
- Exit US-25 S toward Travelers Rest
- Exit US-123 W toward Easley, SC
- Go through Easley on 123 to Clemson
- Turn right on to Pearman Blvd. (first light on US-76 E)
- Littlejohn Coliseum will be on the right

### From Charlotte, NC – 130 miles

- Take I-85 S toward Atlanta, GA
- Take exit 19B to US-76 W to Clemson
- Turn left on to Pearman Blvd. (first left after passing National Guard)
- Littlejohn Coliseum will be on the right

### From Jacksonville, FL – 425 miles

- Take I-95 N toward Fayetteville, NC
- Take exit I-26 toward Spartanburg, SC
- Exit I-385 W toward Greenville, SC
- Exit I-85 S toward Atlanta, GA
- Take exit 19B to US-76 W to Clemson
- Turn left on to Pearman Blvd. (first left after passing National Guard)
- Littlejohn Coliseum will be on the right



## TIGERPAW PRODUCTIONS

Littlejohn Coliseum is unique in many ways, one of which is the opportunity to work with students at our venues. TigerPaw Productions (know as TPP) produces all of the major events on campus as a student organization with the help of various full-time employees. TPP is one of the largest student organizations here at Clemson (and they employ at various levels of involvement with each event). TPP is an entirely student run and student led organization with eight directors in charge of over 500 Clemson students. TPP features students in all positions, from Stage Hands to Box Office workers, and everything in between. Littlejohn Coliseum's full-time employees supervise and advise these students, pushing them to excel at their job. Student directors working for TPP will learn first hand the ins and outs of the entertainment industry.

Working with students offers many benefits: student labor is cheaper than unionized labor; students are eager to learn new talents and techniques through our intensive training program; and students are the next generation of event and venue managers seeking to learn about the industry.

All of the students working at Littlejohn Coliseum have gone through training that is at or above industry standards. All student employees attend briefings prior to each event to receive the most up-to-date and specific information on the event. The students that work for TigerPaw Productions are hand selected for each event to ensure that the integrity and appropriate image for each crew is maintained.

Working with TigerPaw Productions is an exceptional experience that benefits the tour, the promoter, the fan, the students and Clemson University.

TigerPaw Productions actively seeks to be the voice of Clemson students and help recommend successful student shows. In addition, TPP has the ability to co-promote shows.

TigerPaw Productions also maintains a presence in the industry by attending functions for the International Association of Assembly Managers annually and by placing former workers into industry jobs. Former TigerPaw Productions students have left Clemson to take on Event Manager positions for performing arts centers, marketing positions at FELD, positions in talent buying agencies and even positions managing various venues throughout the country.





## MARKETING

Located in the heart of South Carolina's Upstate on the campus of Clemson University, Littlejohn Coliseum serves the entire upstate of South Carolina, the northwest corner of North Carolina and northeast Georgia.

Clemson University and the surrounding areas offer numerous media outlets that cover our market and that can be leveraged for your benefit. We combine experience and fresh ideas to conjure an ideal marketing mix. When you bring an event to Littlejohn, we become part of your team, working towards the same goals for success.

### Demographic Information

- 21,000 on-campus population
- 1.7 million in growing market area
- 51,124 alumni within a two hour drive
- 28% of Clemson's total alumni settle in the Upstate
- 54% of Clemson's total alumni reside in South Carolina (47,547)







## ON-CAMPUS PROMOTION

We can provide numerous on-campus advance promotion opportunities at Clemson University.

- Unparalleled access to University students and employees
- Mass email sent to 17,000 students and 4,000 employees
- Campus-wide promotion including full-color banners, posters, table tents, residence hall postings and campus Web sites
- Campus mailers
- Campus events press releases covering the entire state
- Advertising on campus radio, television and two campus newspapers
- PAWVISION advertisements during football games (80,000 fans)
- Street Team remote promotions with a vehicle, tents, giant inflatable tiger and more.



## OFF-CAMPUS PROMOTION

In addition to on-campus opportunities, many off-campus advance promotional opportunities exist, such as:

Press releases with sponsor information to more than 200 media franchises

Exceptional regional media relationships and extensive advertising

- TV/Cable:
  - WYFF - NBC - Channel 4 - Greenville; WSPA - CBS - Channel 7 -Spartanburg;
  - WLOS - ABC - Channel 13 - Asheville; WHNS - FOX - Channel 21 - Greenville;
  - WNTV - ETV - Channel 29 - Greenville; WRET - ETV - Channel 49 - Spartanburg
  - WBTV - CBS - Channel 3 - Charlotte; WSOC - ABC - Channel 9 - Charlotte;
  - WSB - ABC - Channel 2 - Atlanta; WGCL - CBS - Channel 46 - Atlanta
- Charter Media - offers a verity of cable channels and advertising opportunities across the nation
- Radio:
  - 88.1 - WSBF - Alternative/Variety; 89.3 - WLFJ - His Radio - Christian; 90.1 - WEPR - Public/Classical;
  - 92.5 - WESC - Carolina's Best Country; 93.3 - WTPT - New Rock 93.3 - The Planet 93.7 - WFBC - Top 40 Hits;
  - 94.5 - WMUU - Unique - Christian; 95.9 - WPLS - College/ free format;
  - 96.7 - WBZT - Shine 96.7 - Christian; 98.1 - WHZT - HOT 98 - Urban Hits; 103.3 - WOLT - Oldies/Sports;
  - 98.9 - WSPA - Magic 98.9 - Adult Contemporary; 100.5 - WSSL - Hot New Country;
  - 101.1 - WROQ - Rock 101 - classic rock; 102.5 - WMYI - My 102.5 - soft rock;
  - 104.9 - WCCP - The Drive - Sports Radio; 107.3 - WJMZ - JAMZ! - Urban Contemporary;
  - 103.9 - WOLI - La Lider 103.9 - Spanish; 91.5 - WWEV - Victory 91.5 - Christian;
  - 88.5 - WRAS - Album 88 - College; 95.5 - WBTS - The Beat - Top 40; 96.1 WKLS - Classic Rock;
  - 95.1 - WNKS - Kiss 95.1 - Top 40; 96.1 - WIBT - Hip Hop; 96.8 WKKT - Kat Country - Country
- Billboards



- Promotional advertising on the front of TicketMaster envelopes
- Promotional inserts in TicketMaster ticket envelopes
- Placement and features in local newspapers, periodicals and community calendars, including other local colleges
- Advertising at local businesses through group sales
- Internet links with TicketMaster, fan sites and media sites
- Printable coupons from our Web site
- Contests



#### From I-85 North

- \* Take I-85 South toward Atlanta, GA
- \* Take exit 19B to US-76 W to Clemson
- \* Drive about 9 miles on US-76
- \* Turn left on Pearman Blvd.  
(first left after passing National Guard)
- \* Littlejohn Coliseum will be on the right

#### From I-85 South

- \* Take I-85 North toward Charlotte, NC
- \* Take exit 19B to US-76 W to Clemson
- \* Drive about 9 miles on US-76
- \* Turn left on Pearman Blvd.  
(first left after passing National Guard)
- \* Littlejohn Coliseum will be on the right

#### TO LOADING/ UNLOADING/ BUS PARKING

To get to parking, take the 1st right after you pass the football stadium on the Avenue of Champions. If you pass the arena you have gone too far.

#### Airports

##### Oconee County Regional Airport

864-882-2959

Located less than 10 minutes from the facility, the Oconee County Regional Airport can accommodate private business aircraft. We will arrange shuttle service to the venue

##### Greenville/Spartanburg Airport (GSP)

The international airport at Greenville/Spartanburg is 45 miles from Littlejohn Coliseum in Clemson SC. The airport is serviced by American Eagle, Continental, Delta, United, Northwest and US Airways.

#### Charlotte Douglas (CLT) & Hartsfield Atlanta International (ATL) Airports

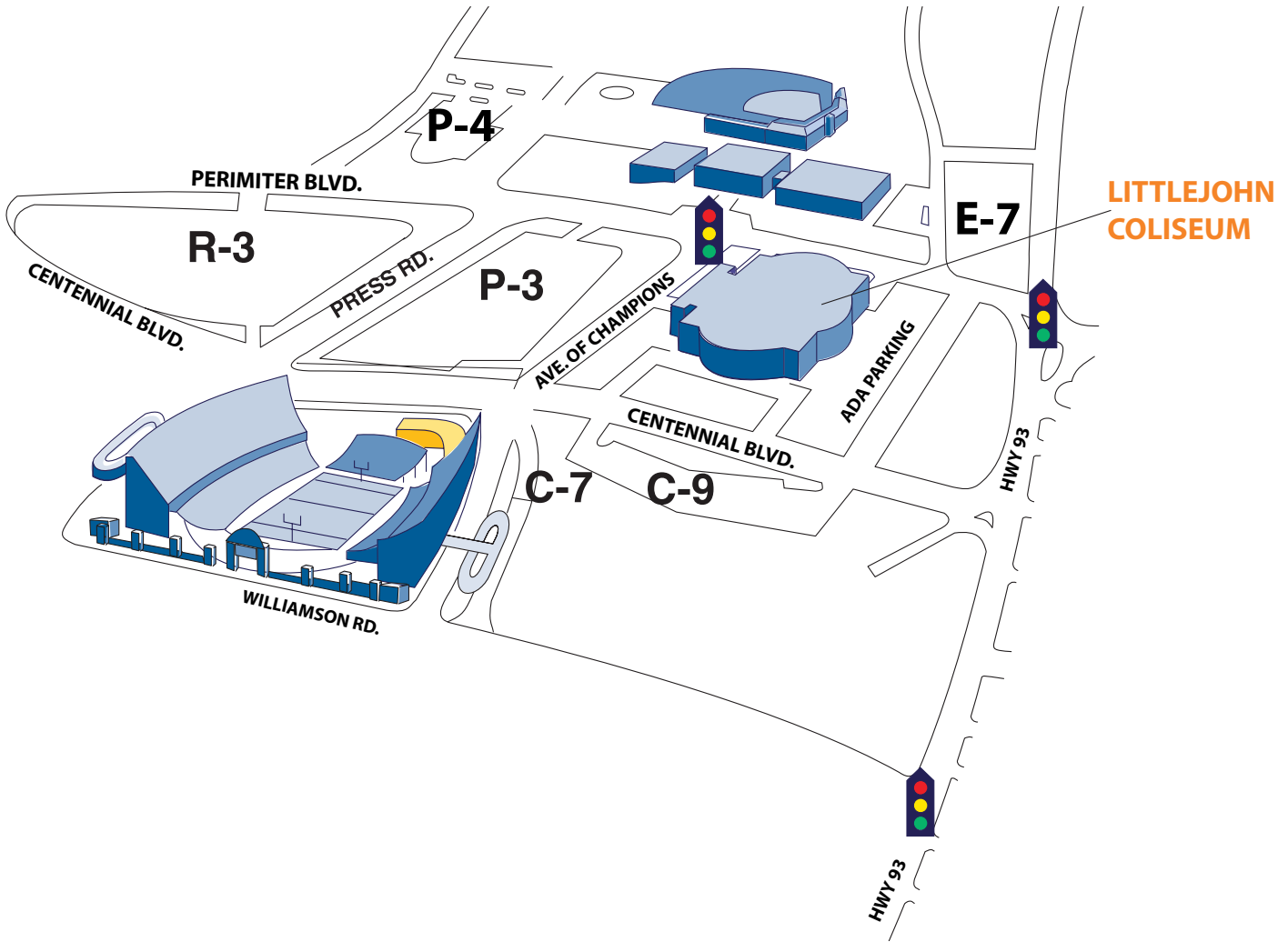
Both airports in Atlanta and Charlotte are a two-hour drive away from the venue.

#### AMTRAK Station

An AMTRAK station is located in Clemson with daily scheduled service five minutes away.

## PATRON PARKING

Littlejohn Coliseum has ample and convenient parking located near and around the building. Several Clemson University parking lots are used on show days for easy access and departure.



| general parking lot name | capacity/<br>number of spaces |
|--------------------------|-------------------------------|
| C-7                      | 63                            |
| C-9                      | 93                            |
| E-7                      | 127                           |
| P-03                     | 788                           |
| P-04                     | 231                           |
| R-3                      | 781                           |

Accessible parking: Off of Centennial Blvd. at the north entrance of the Coliseum

## EQUIPMENT

### Staging

StageRight brand professional stage constructed from 4'x 8' modules

Flexible sizes (normal 60'x 40')

Height 4' to 6'6" (2" increments)

96' of safety hand rail

80' of toe rail

2 stair sets available

Wings available per request

140' of skirting available

### Additional platforms

Height 18" to 24"

1 stair set available

Skirting available

### Barricades

4' to 60' of free standing crowd control barrier

36' of mesh blow through material

24' of sold material

6' and 8' bike rack available upon request

### Forklift

(1) 5000lb forklift (additional rental forklift available upon request)

\* Forklift has to be on double stacked plywood

### Headset intercom system

Production Intercom brand

(8) headsets and belt packs

Hard wired ports located at spotlight platform, house lights and arena floor

### House Curtain

80'w x 60'h black curtain on a truss which can be placed at various locations in the arena as a back drop

### Spotlights

(2) Lycian 1275 follow spots

(more available upon request)



## BOX OFFICE INFORMATION

Box Office Manager 864-656-6675  
 East (Main) Box Office 864-656-1413  
 West Box Office 864-656-2990

Littlejohn Coliseum utilizes Ticketmaster ticketing technology. We are an Access Manager facility, scanning tickets at the door for authenticity verification and instantaneous head counts. We also utilize Ticket Exchange for customer convenience and Report Pro for enhanced reporting capabilities. Tickets are available for purchase online, via telephone, on campus in our East Box office and at various ticketmaster outlets throughout the Southeast. Littlejohn Coliseum has 2 physical box offices, located on the east and west sides of the building. Box office hours vary from week to week depending on the amount of shows on sale.

**Ticket Text:** Ticketmaster ticket text allows for the following ticket information, up to 25 characters per line:

Sponsor Information  
 SHOW TITLE-LARGE FONT  
 smaller font, usually opener  
 LITTLEJOHN COLISEUM  
 Optional text for doors, pre-party, more sponsor info., etc  
 DAY/DATE/TIME

### Group Sales:

Groups 15+ receive \$3.00 off per ticket for designated performances and are tracked by a separate ticketmaster code. Littlejohn Coliseum has a Group Sales database of local companies that usually buy tickets and promote upcoming shows within their company.

### Complimentary Tickets

Complimentary tickets will be issued only with authorization from the SHOW, PROMOTER and LITTLEJOHN COLISEUM MANAGEMENT. Any holds or complimentary tickets that are not needed should be released the day before the show when at all possible. Complimentary tickets are typically distributed to major sponsors and media outlets in exchange for marketing efforts.

### General Public On-Sale

On-sales are typically on a Saturday, beginning at 10 a.m. Littlejohn's Box Office will be open for the on-sale, and tickets are available through Ticketmaster outlets, phones and internet. Normally tickets will go on sale for Clemson University students one day in advance of the general public on-sale, with every other row being held for the general public. The box office will also facilitate any fan club or radio presales.

## LODGING

Clemson University is located in Clemson, SC. A listing of lodging options, dining, shopping and airport transportation is provided here for your convenience but our staff will be glad to speak with you directly for recommendations. For more information on the area, visit: [www.clemson.edu](http://www.clemson.edu) or [www.visitpickenscountysc.com](http://www.visitpickenscountysc.com)

*In order of distance to Littlejohn Coliseum*

### James F. Martin Inn

Located on Clemson University's Campus  
27 Suites - 2 Guest Rooms  
888-654-9020

### Comfort Inn - Two Stars

1305 Tiger Blvd., Clemson, SC 29633  
Hotel - 4 floors, 122 rooms  
1 mile to Clemson University  
864-653-3600

### Days Inn - Two Stars

1387 Tiger Blvd., Clemson, SC 29631  
Motel - 2 floors, 44 rooms  
1 mile to Clemson University  
864-653-4411

### Hampton Inn - Two Stars

851 Tiger Blvd., Clemson, SC 29631  
Swimming Pool - Fitness Center  
3 miles to Clemson University  
864-653-7744

### Ramada Inn and Suites - Two Stars

Intersection of US 76 & 123, Clemson, SC 29631  
Heated Indoor Swimming Pool - Restaurant - Bar  
3 miles to Clemson University  
864-654-7501

### Sleep Inn - Two Stars

1303 Tiger Blvd., Clemson, SC 29631  
Hotel - 3 Floors, 57 Rooms  
3 miles to Clemson University  
Indoor Swimming Pool - Free Access to Local Gym  
864-653-6000

### Holiday Inn Express Hotel & Suites - Clemson - Two Stars

1381 Tiger Boulevard  
Clemson, SC 29631  
3 miles to Clemson University  
864-654-9410

### Courtyard Marriott - Clemson - Three Stars

201 Canoy Lane  
Clemson, SC 29631  
3 miles to Clemson University  
864-654-8833

### Country Inn and Suites - Anderson - Two Stars

116 Interstate Blvd., Anderson, SC 29621  
Hotel - 5 Floors, 55 Rooms and Suites  
Heated Indoor Swimming Pool - Fitness Center  
10 miles to Clemson University  
864-622-2200

### Fairfield Inn by Marriott Anderson/Clemson - Two Stars

117 Interstate Blvd.  
Anderson, SC 29621  
10 miles to Clemson University  
864-332-9000

### Holiday Inn Express Suites - Anderson - Three Stars

107 Interstate Blvd., I-85 at US 76, Anderson, SC 29621  
Hotel - 3 Floors, 75 Rooms and Suites  
Indoor, Outdoor Swimming Pools - Fitness Center  
Restaurant  
10 miles to Clemson University  
864-226-3312

### Microtel Inn Suites - Anderson - Two Stars

102 Electric City Blvd  
Anderson, SC 29621  
10 miles to Clemson University  
864-224-9707

### La Quinta Inn - Anderson - Three Stars

3430 North Main Street, Anderson, SC 29621  
Hotel - 2 floors, 100 Rooms  
Outdoor Swimming Pool - Restaurant  
15 miles to Clemson University  
864-225-3721

### Quality Inn - Anderson - Three Stars

3025 North Main St.  
Anderson, SC 29621  
Outdoor Swimming Pool - Fitness Center  
Restaurant - Lounge  
15 miles to Clemson University  
864-226-6051



## LODGING, CONTINUED

Holiday Inn Express Downtown - Greenville - Three Stars  
 407 North Main Street, Greenville, SC 29601  
 Hotel - 5 Floors, 80 Rooms and Suites  
 Outdoor Swimming Pool - Fitness Center -Breakfast Bar  
 30 miles to Clemson University  
 864.678.8000

Courtyard by Marriott Airport - Greenville - Three Stars  
 115 The Parkway, Greenville, SC 29615  
 136 Rooms, Some with Jacuzzis  
 Free Airport Shuttle  
 40 miles to Clemson University  
 864.213.9009

Hyatt Regency - Greenville - Three Stars  
 220 North Main Street, Greenville, SC 29601  
 Downtown Hotel - 8 Floors, 327 Rooms and Suites  
 Free Shuttle to/from GSP Airport  
 40 miles to Clemson University  
 864.235.1234

Marriott - Greenville -Three Stars  
 One Parkway East, Greenville, SC 29615  
 Hotel - 7 Floors, 200 Rooms, 4 Suites  
 Free Airport Shuttle  
 40 miles to Clemson University  
 864. 297.0300

Westin Poinsett - Greenville - Four Stars  
 120 Main Street, Greenville, SC 29601  
 Luxury 1920's era Hotel - 13 Floors, 200 Rooms  
 30 miles to Clemson University  
 864.421.9700

## DINING

|   |              |
|---|--------------|
| 1826 On the Green- Pendleton                            | 864-646-5500 |
| 356 - sushi, american bistro                            | 864-654-2356 |
| Ancheaux's Eatery - southwestern                        | 864-654-6060 |
| Beef O' Brady's   | 864-654-5151 |
| Brioso - pasta  | 864-653-3806 |
| Bojangle's  | 864-654-8135 |
| Blue Heron - sushi                                      | 864-653-3354 |
| Cafe Leisure at Historic Liberty Hall Inn - fine dining | 864-646-7500 |
| Calhoun Corners - fine dining                           | 864-654-7490 |
| Central Station Cafe - southern cuisine                 | 864-659-6780 |
| Columbo's Pizza - pizza, calzones and subs              | 864-654-1103 |
| Domino's Pizza - pizza, delivers                        | 864-653-7575 |
| Exchange Street - bar and grill                         | 864-646-6337 |
| El Jimador - Mexican                                    | 864-654-8006 |
| Farmer's Hall - fine dining                             | 864-646-5511 |
| Firehouse Subs - hot subs                               | 864-654-7827 |
| Friends Café - hookah bar                               | 864-654-4445 |

## DINING, CONTINUED

|   |              |
|---|--------------|
| Griffin's Sports Bar and Grill                                | 864-654-5008 |
| House of Leung - chinese                                      | 864-654-6058 |
| Huddle House  | 864-654-4161 |
| Jersey Mikes Subs - subs                                      | 864-654-9266 |
| Just More Barbecue - just good barbecue                       | 864-646-3674 |
| Mac's Drive-In - burgers and more                             | 864-654-2845 |
| Mellow Mushroom - pizza, calzones and subs                    | 864-624-1226 |
| Moe's Southwest Grill - mexican                               | 864-654-6630 |
| Monterrey's Mexican Restaurant - Mexican                      | 864-654-1005 |
| Paesano's Italian - fine Italian dining                       | 864-882-3368 |
| Panchos Mexican Restaurant - authentic Mexican                | 864-639-0018 |
| Pixie and Bill's - fine dining                                | 864-654-1210 |
| Pizza Hut - pizza, delivers                                   | 864-654-8646 |
| Pendleton House Restaurant and Pub, Inc. - candlelight dining | 864-646-7795 |
| Peppinos Pizza  | 864-653-3555 |
| Pot Belly Deli  | 864-653-3663 |
| Riviera Restaurant- Turkish cuisine                           | 864-653-8855 |
| Rockhoppers Restaurant and Bar - burgers, chicken and pasta   | 864-654-9944 |
| Ruby Tuesdays- american                                       | 864-653-8050 |
| Sardi's Den - ribs, steak and chicken                         | 864-654-7427 |
| Seasons by the Lake - fine dining                             | 864-656-7444 |
| Subway  | 864-654-1432 |
| TD's Food and Drink - american, local                         | 864-653-6518 |
| The Esso Club - american, local                               | 864-654-5120 |
| Tiger Town Tavern - american, local                           | 864-654-5901 |
| Todaro Pizza  | 864-654-3001 |
| Tokyo Japanese Steak House                                    | 864-653-5889 |
| Western Sizzlin' Steak House                                  | 864-654-3112 |
| Wingin' It  | 864-654-2444 |
| Zaxby's   | 864-653-6768 |

## LOCAL INFORMATION

Littlejohn Coliseum ensures that everyone traveling with your group is comfortable and satisfied while in Clemson. We can bring in a myriad of services to suit your needs. Let us know in advance any special needs, and we will assist you in making your stay memorable.

### Car Rental

|            |                |
|------------|----------------|
| Budget     | 1-800-527-0700 |
| Enterprise | 864-653-5542   |
| Thrifty    | 864-226-5666   |

### Limousine Rental

|                 |                |
|-----------------|----------------|
| Eagle Limousine | 864-220-0133   |
| Image Limousine | 1-888-796-4701 |
| Wolfe Limousine | 1-800-77-WOLFE |

### Golf

|                    |              |
|--------------------|--------------|
| Walker Golf Course | 864-656-0236 |
| Boscobel           | 864-646-3991 |
| Cobbs Glen         | 864-226-7687 |
| Woodhaven          | 864-646-9511 |

### Dry Cleaners

|                      |              |
|----------------------|--------------|
| Clemson Dry Cleaners | 864-654-3616 |
| Kings Cleaners       | 864-654-1172 |

### Health Clubs

|                        |              |
|------------------------|--------------|
| Fike Recreation Center | 864-656-6559 |
| Gold's Gym             | 864-653-4653 |
| Central Recreation     | 864-639-1111 |
| Anytime Fitness        | 864-654-2918 |
| Curves                 | 864-654-3456 |

### Massages

|                    |              |
|--------------------|--------------|
| Currie Megan, LMT  | 864-654-2228 |
| Massage for Health | 864-882-8393 |
| Headlines          | 864-654-4141 |

### Pharmacy

|               |              |
|---------------|--------------|
| Rite Aid      | 864-654-6050 |
| CVS           | 864-654-6237 |
| Hubbard Young | 864-882-8393 |
| Walgreen's    | 864-653-7962 |

# CONCERT TIMELINE



LITTLEJOHN HISTORY

## 2008

**Jason Aldean** with Lady Antebellum and Eric Durrance

**Steve Miller Band**

**Jim Gaffigan-The Sexy Tour**

**Buckcherry** with Shinedown and Saving Abel

**America's Best Dance Crew**

**Tiger Shag** featuring The Catalinas, The Embers, The Out of Towners, The East Coast Band

**Last Chance Summer Dance** featuring Jesse McCartney, Bowling for Soup, We the Kings, Colby O'Donis, Shontelle

**Ringling Bros. Barnum and Bailey Circus**

**Solid Orange Live** with Eddie Money, Wyclef Jean, The Wailers, The Whigs, Colbie Caillat

**Ron White**

**Go, Diego, Go LIVE!**

## 2007

**Fall Out Boy** with Gymclassheroes, Plain White T's and Cute Is What We Aim For

**Three Days Grace & Breaking Benjamin** with Seether and Red

**Newsboys** with kutless and newworldson

**Luke Bryan** with Doug McCormick

**Bob Dylan** with Elvis Costello and Amos Lee

**Jo Dee Messina** with Lee Brice and Jason Michael Carroll

## 2007 continued

**Corey Smith** with Florez

**Tiger Shag** featuring General Johnson & The Chairmen of the Board, Maurice Williams & The Zodiacs

**Last Chance Summer Dance** featuring Elliot Yamin & Sean Kingston

**Sister Hazel** with Take Note and By'r Lady

**Dierks Bentley** with Miranda Lambert and Eric Church

**Perpetual Groove**

**Thomas and Friends**

## 2006

**Sugarland** with Lost Trailers

**Death Cab for Cutie** with Ted Leo + Pharmacists

**Barney and Friends**

**Ludacris** with Yung joc

**Last Chance Summer Dance** featuring NeedtoBreathe, Hedley, Mario Vazquez, Ashley Parker Angel

**Corey Smith**

**Kid Rock** with Ty Stone and Noxious

## 2005

**Point of Grace & The Crabb Family**

**Pat Green & Dierks Bentley** with Cross Canadian Ragweed

**Death in the Valley** featuring Yellowcard, Acceptance, Pink Spiders

## 2005 continued

**Widespread Panic**

**Ciara** with Pretty Ricky, Mario, Nikki Flores

**Kelly Clarkson** with Graham Colton Band

**Rodney Carrington** with Mark Gross

**Larry the Cable Guy**

**3 Doors Down** with Illbreak and Saliva

**TigerGras** featuring Switchfoot and NeedtoBreathe

**Angie Stone** with Anthony Hamilton

## 2004

**Keith Urban** with Katrina Elam

**O.A.R.** with Ben Lee and Ari Heist

**Ron White**

**Dave Chappelle**

**Hank Williams, Jr.**

**Alabama-Farewell Tour**

**MTV's Campus Invasion Tour** featuring Hoobastank and Lost Prophets

**Brooks & Dunn** with Joe Nichols and Josh Turner

## 2003

**Lynyrd Skynyrd** with 38 Special and Mother's Finest

**Southern Slang Tour** featuring Bubba Sparxxx, Three 6 Mafia and Pastor Troy

**Hank Williams, Jr.** with Six Wire

