

Bridgestone Arena

Venue Information Guide

Address: 501 Broadway
Nashville, TN 37203

Phone: 615-770-2000
Fax: 615-770-2010

Powers Management Administration Office entrance is located on the corner of 6th Avenue and Broadway

Box Office (*NOTE: Subject to change without notice)

The Bridgestone Arena box office utilizes the Ticketmaster system.

Ticket Window Hours: Monday-Saturday 10:00am-5:30pm

Main Box Office Number: (615) 770-2040 Fax: (615) 770-2020

Website: www.bridgestonearena.com
www.ticketmaster.com/bridgestonearena

Event	Est. Capacity	Floor Size	Sq. Ft.
Concert	17,500	185' x 85'	15,725
Full House Proscenium	10,700	100' x 85'	8,500
Music City Theater	6,900	50' x 85'	4,250
In the Round	18,400	200' x 85'	17,000
Basketball (inc. floor)	17,300	200' x 85'	17,000
Arena Football/Rodeo	16,000	200' x 85'	17,000
Fixed Seating Only	13,600	275' x 155'	42,625

Backstage (*Clients may use approved outside caterers*)

Production Offices	Size
Production Office 2, and 3	200 sq. ft.
Promoter Office	150 sq. ft.

Hospitality Rooms	Size
Crew Catering	1300 sq. ft.
Green Room	1800 sq. ft.
Corporate Reception	2000 sq. ft.

Media Rooms	Size
Media Lounge	1240 sq. ft.
Radio Work Room	550 sq. ft.
Interview Room 'H'	675 sq. ft.
Press Work Room	1035 sq. ft.

Dressing Rooms	Size
Dressing Room A	500 sq. ft.
Dressing Room B	200 sq. ft.
Dressing Room C	200 sq. ft.
Dressing Room D	700 sq. ft.
Dressing Room E	300 sq. ft.

Team Locker Rooms	Size	Number of Lockers
Visiting Hockey	1500 sq. ft.	26 Lockers
Locker Rooms 1, 2, and 3	600 sq. ft. each	23 Lockers each

All Dressing Rooms and Locker Rooms are equipped with restrooms and handicapped accessible showers. Square footage is based on non-furnished rooms. All rooms are equipped with running game clocks. Dressing room furniture rental is \$500.00.

Rehearsal Hall

Rehearsal Hall	Size
Rehearsal Hall	120' x 90'
Production 1	17' x 17'
Production 2	10' x 12'
Corporate Reception	2000 sq. ft.

Conference Center

Conference Center Meeting Rooms (<i>Levy Restaurants is the contracted catering company</i>)
2-3,000 sq. ft. or 4-1,500 sq. ft or 8-750 sq. ft. <i>Registration area available</i>

Load IN/OUT and Parking

Entrance to loading dock located at the intersection of 7th and Shirley.

Loading Dock access door entrance clearance: Height: 16' Width: 16'

Loading Dock-30,000 sq. ft. Underground obstacles: None

Staging Area access door clearance: Height: 14' 6" Width: 22'

Arena access door clearance: Height: 16' Width: 16'

Number of trucks to load/unload at one time: 3 during load-in, 4 during load-out. A truck may be positioned in the 4th dock after 5pm.

Rehearsal Hall load-in/out: 2 trucks

Number of trucks/buses to park at one time: 12

Overflow parking: Varies

Freight Elevator: 10,000 lbs. capacity with access to catwalk. Width: 6' Depth: 14'

House Equipment:

1-Hyster forklift-5000lbs. capacity – 171" max height

2-Hyster forklift-6000lbs. capacity—171" max height

Wrenn 12' Carpet Pose

Wrenn Work Platform

Bobcat Loader w/ Attachments

2-Scissor Lifts (Height: 20' and 35')

Upright Personnel Lift-54' max height

Genie Articulated Boom Lift-46' max height

Spotlights:

8-Strong Xenon Gladiator III (3kw), 4-Strong Xenon Super Trouper (2kw)

Curtains:

The Bridgestone Arena maintains a stock of 75' long goods to use in either it's half-house or it's end-stage configurations. In addition, there is a WNBA-style upper bowl reduction curtain run on ½-ton CM motors with power and control from the spot towers

Stage Equipment

Type: StageRight	Height: Variable <i>Max. 6'4" Min. 4'</i>
Max. Stage Size: 120' x 80'	Panel Size: 4' x 8'
<i>Placement of upstage edge is 8' off collapsed telescopic riser.</i>	
Weight Capacity: 125 lbs. per square foot	
Number of Stairs Available: 3	Skirting: 160' Handrails: 160'
Barricade: Free Standing- MOJO-style	Length: 100' Height: 4'
Wheelchair Ramp: 1 ramp 0" to 24" high, 1 ramp 0" to 72" high. Skirting for both sides	
In House operations crew sets: Stage, Mixer, Wings, and Barricade	

Phone/ Internet

Telephone service per line: \$175
Internet service per line: \$250

Power Information

All power connections by labor service electrician. Please review labor service section for information.

Show Power			
Up Stage Right:	AMPS	PHASE	VOLTS
	2-400	3	120/280
	2-400	3	120/208 isolated
	2-400	3	120/208
Up Stage Left:	AMPS	PHASE	VOLTS
	1-800	3	120/208
	2-400	3	120/208 isolated
	2-200	3	120/208
<i>Services are on separate transformers</i>			
Bus Hookups:	12 @ 50 AMP		
Plaza Power	AMPS	PHASE	VOLTS
	1-200	3	120/208
Vomitory Power			
Event Level	AMPS	PHASE	VOLTS
North West Vomitory	1-400	3	208/120
North East Vomitory	1-200	3	208/120
Home Locker Room Tunnel	1-200	3	208/120

Rigging Report

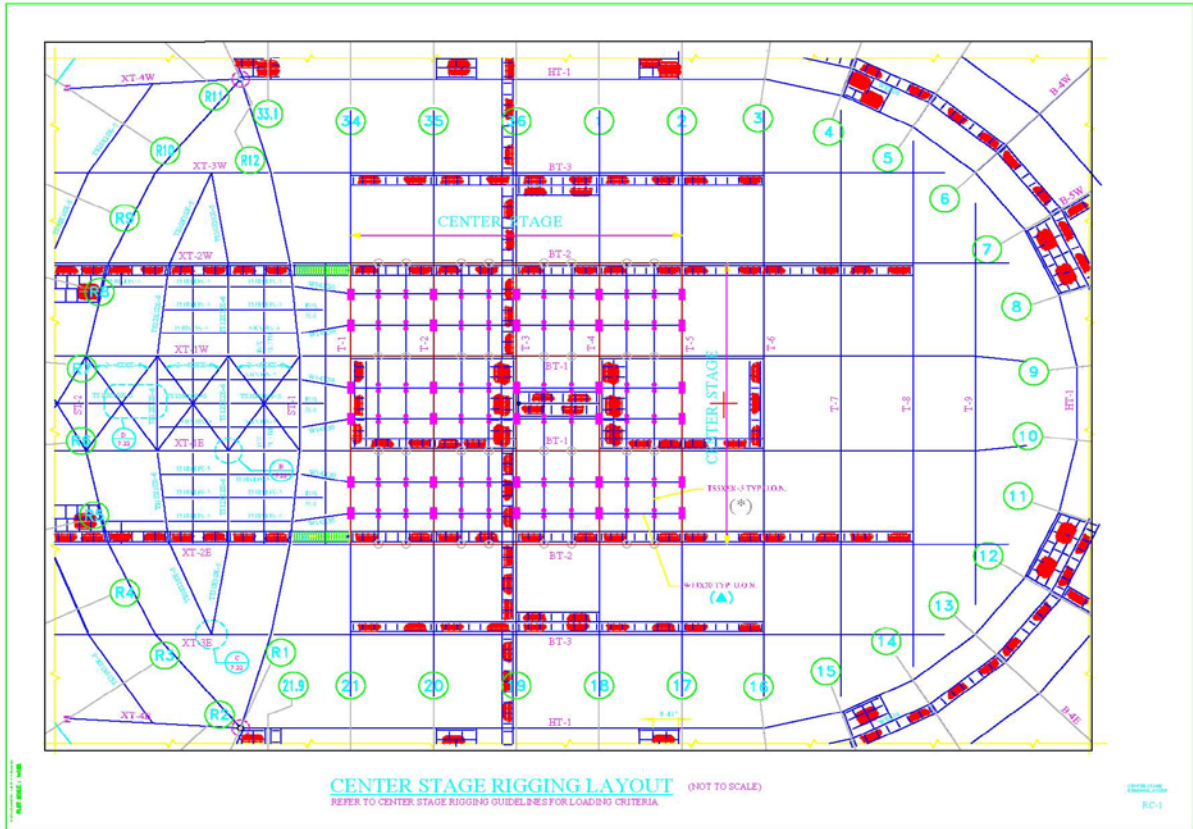
Arena Bowl	Floor to beam (proscenium stage)	90'6"
	Floor to beam (center stage)	104'
	Floor to beam (north end)	111'

	Scoreboard	Center (can not be removed) Jumbotron measures 40'x 40' at the top and 32'x 32' at the base
	Grid weight limit:	120,000 lbs
Rehearsal Hall	Floor to beam:	52'
	Floor to beam (south end):	91'
	Floor to beam (center):	84'
	Floor to beam (north end):	75'

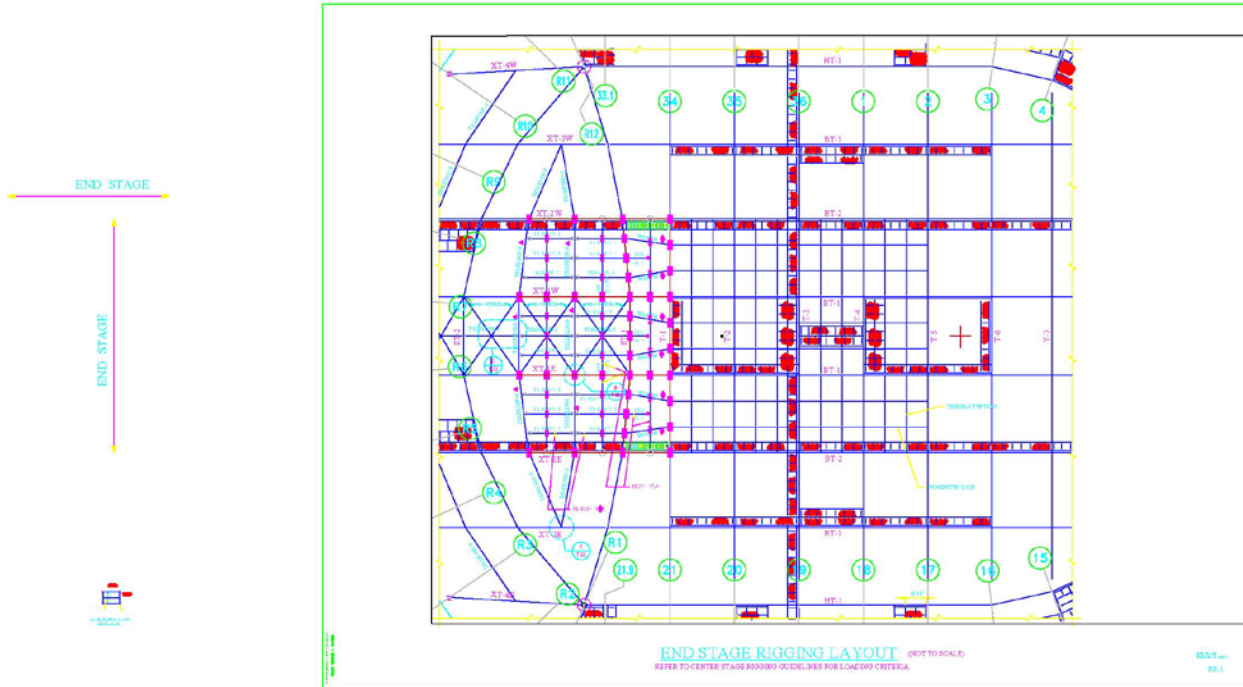
Primary Contacts

David Kells	VP of Booking	(615) 770-2047
	dkells@powersmgmt.com	
Ben Bosse	Event Coordinator	(615) 770-7869
	bbosse@powersmgmt.com	
Danny Butler	Event Coordinator	(615) 770-2060
	dbutler@powersmgmt.com	
Shelby Crisan	Event Coordinator	(615) 770-2089
	scrisan@powersmgmt.com	

Center Stage Rigging Plot



End Stage Rigging Plot Event



Bridgestone Arena Event Level

