

Belle Mehus Auditorium

Technical Specs



Stage:

32'8" Wide x 29'7" Deep

Proscenium Opening:

20'0" High x 32'8" Wide

Sound Shell Options:

Large Set – 39' Wide x 30'6" Deep

Small Set – 34' Wide x 24' Deep

Off Stage Space:

Stage Right – 12' Stage Left – 15'

Orchestra Pit:

30' Wide x 10'6" Deep

3'8" High (pit wall removable)

Pit Lift:

24' Wide x 6' Deep

Permanent Curtain Lines at:

Set 1: 7'6" Set 2: 13'6"

Set 3: 24'

Power

400 Amps Stage Left (2)

Mackie 24 Channel Mixer

Lighting

128 total Lights

19, 26 and 36 Degree

FRESNEL

PAR 64

Strands

CYC Trips and Sings

Gel frames are available, with a pattern holder for up to 12 ellipsoidals.

Seating Capacity:

Main Level: 452

Wheel Chair: 4

Front Balcony: 102

Middle Balcony: 140

Upper Balcony: 111

Box Seats:

Lower level: 12

Upper level: 12

*All Seats are individually padded chairs

**Numbers without kills for sound and lights, or obstructions.

Load in Door Stage Door

H: 8' W: 12' H: 13'8" W: 9'

*65' from Street

Dressing/Private Rooms

Private Room A

Locker Room B

Locker Room C

(Room B & C can be made one large room)

Private Room D

Plus:

Lower/Upper Atrium

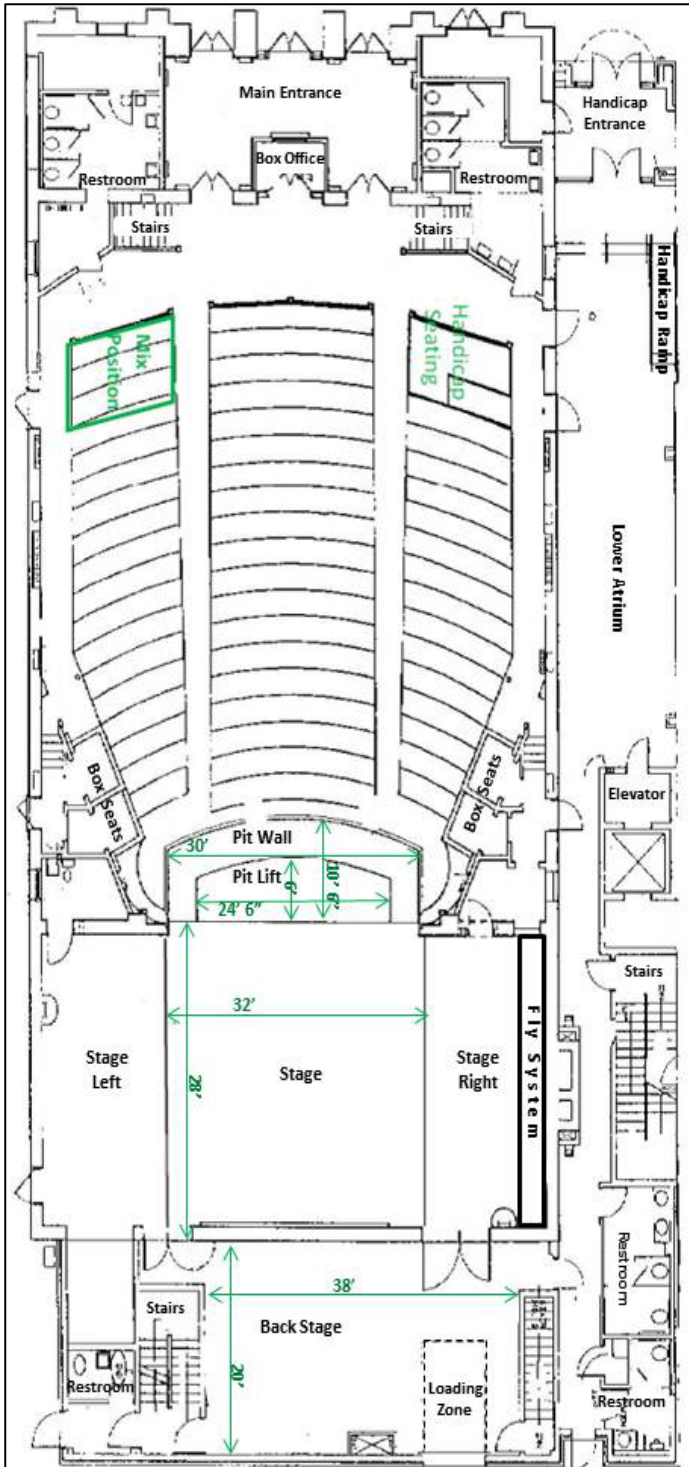
Conductors Room

Restrooms

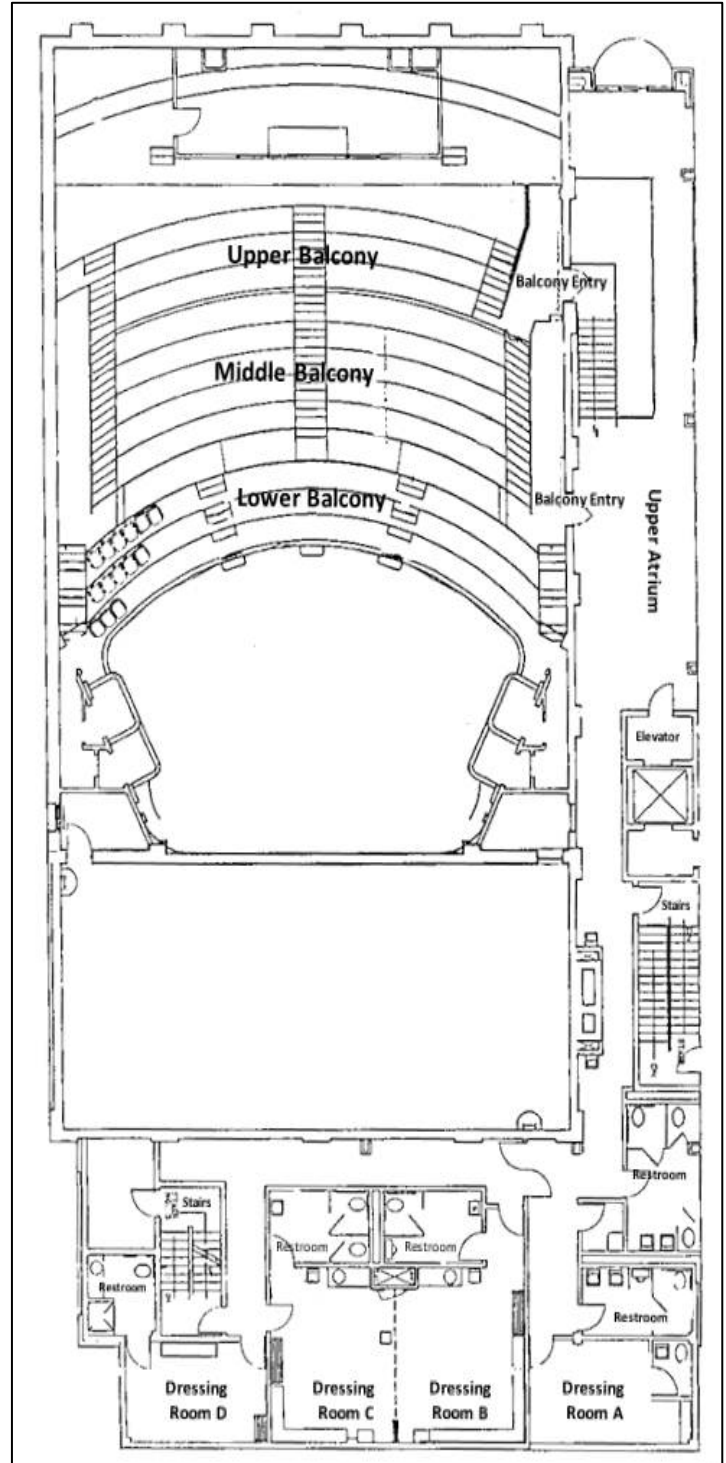
Elevator

Sound / Light Control Room

Belle Mehus Auditorium Layout



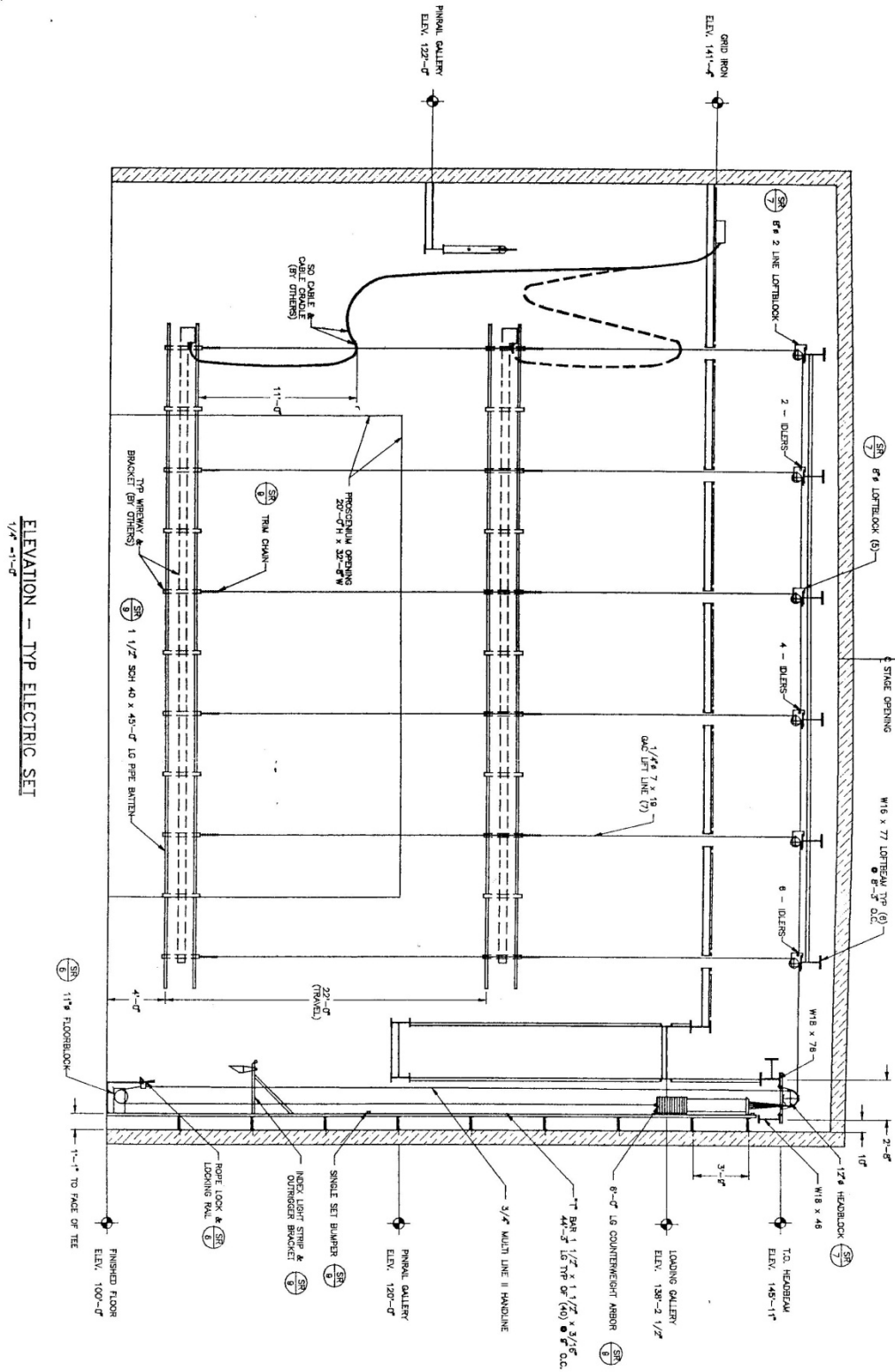
Main Level



Upper level

Belle Mehus Auditorium

Rigging Map



ELEVATION - TYP ELECTRIC SET
1/4" = 1'-0"