

# AMERICAN AIRLINES CENTER®



Since opening in July 2001, the American Airlines Center® has set a new standard for sports and entertainment facilities. From its **traditional architecture** to **hi-tech innovation**, the American Airlines Center has become a **premier sports and entertainment venue** in the United States. The American Airlines Center is the home of the **NBA Dallas Mavericks & NHL Dallas Stars**.

Inside, the facility offers the finest in amenities with **five concourses, 118 luxury suites, 2 large party suites, 36 theater boxes** and room for **20,200 basketball or 18,500 hockey fans**. The **retractable seating** brings the bowl in closer to the action, allowing fans a more **intimate experience** and **exceptional sight lines**.



2500 Victory Avenue • Dallas, TX 75219 • 214.665.4299

[www.americanairlinescenter.com](http://www.americanairlinescenter.com)

Event Department:	214.665.4232	Fax: 214.665.4750
Operations Department:	214.665.4809	Fax: 214.665.4801
Box Office:	214.665.4797	Fax: 214.665.4790

COO / General Manager	Dave Brown	<a href="mailto:dbrown@aacntr.com">dbrown@aacntr.com</a>
Senior VP, Arena Programming	Ken Kuhl	<a href="mailto:kkuhl@aacntr.com">kkuhl@aacntr.com</a>
Director of Event Marketing	Melissa Koehler	<a href="mailto:mkoehler@aacntr.com">mkoehler@aacntr.com</a>
Director of Operations	Mose Boyer	<a href="mailto:mboyer@aacntr.com">mboyer@aacntr.com</a>
Director of Ticketing	Eric Bruce	<a href="mailto:ebruce@aacntr.com">ebruce@aacntr.com</a>
VP, Guest Experience	Gina Chapa	<a href="mailto:gchapa@aacntr.com">gchapa@aacntr.com</a>
Director of Security	Michael Ebow	<a href="mailto:mebow@aacntr.com">mebow@aacntr.com</a>
Director of Parking & Traffic Planning	Lorenzo Vigilante	<a href="mailto:lvigilante@aacntr.com">lvigilante@aacntr.com</a>
Broadcast & Media Services Manager	Randy Breedlove	<a href="mailto:rbreedlove@aacntr.com">rbreedlove@aacntr.com</a>
Box Office Manager	Caroline Zalman	<a href="mailto:czalman@aacntr.com">czalman@aacntr.com</a>
Merchandise Sales Manager	Michael Bray	<a href="mailto:mbray@aacntr.com">mbray@aacntr.com</a>
Director of Events	Wellington Hughes	<a href="mailto:whughes@aacntr.com">whughes@aacntr.com</a>



# TECHNICAL INFORMATION

## Buses

Parking for tour trucks/buses is in the loading dock, the basement of the Silver Garage and on Valor Street, located on the west side of the arena. Loading dock parking is on a space available basis only. Idling is not allowed in the loading dock or basement of the Silver Garage. The Lexus Garage is available for limited vehicle parking. Overflow Truck and Bus parking is available at Woodall Rodgers Plaza. See map for details.

## Crew Rooms

The facility has available for use separate but adjacent men and women's crew rooms. The crew rooms also have the ability to be made into one room. These rooms have full restroom and shower facilities available as well as televisions with cable.

- |                     |         |                |
|---------------------|---------|----------------|
| • Women's Crew Room | 14'x12' | <b>EA.0181</b> |
| • Men's Crew Rooms  | 14'x12' | <b>EA.0184</b> |

## Dressing Rooms

There are four large dressing rooms all with televisions, full restroom and shower capabilities. The four dressing rooms also the option of being divided into seven rooms by way of a sound deadening air wall. The Performer's Rooms and Auxiliary Dressing Rooms 1 & 2 are carpeted while Auxiliary Rooms 3 & 4 have rubber flooring.

All dressing rooms are located stage and within 200' of the typical end stage location.

- |                             |                          |                |
|-----------------------------|--------------------------|----------------|
| • Performer Rooms 1A & 1B   | 15'x15' each, or 30'x15' | <b>ED.0153</b> |
| • Aux. Dressing Rooms 1 & 2 | 15'x15' each, or 30'x15' | <b>ED.0187</b> |
| • Aux. Dressing Rooms 3 & 4 | 15'x15' each, or 30'x15' | <b>ED.0191</b> |

## Electrical Equipment

There are two upstage electrical rooms as well as one downstage electrical room located in the zamboni tunnel. The upstage rooms are located stage left and stage right approximately 150' from upstage center. Shore power is available in the loading dock. The house electrician will make all power connections.

### Power Availability:

<b>STAGE LEFT</b>	2) 3 phase 800 amp service	<b>STAGE RIGHT</b>	2) 3 phase 800 amp service
<b>STAGE LEFT</b>	2) 3 phase 600 amp service	<b>STAGE RIGHT</b>	2) 3 phase 600 amp service
<b>STAGE LEFT</b>	2) 3 phase 400 amp service	<b>STAGE RIGHT</b>	2) 3 phase 400 amp service
<b>STAGE LEFT</b>	2) 3 phase 200 amp service	<b>STAGE RIGHT</b>	2) 3 phase 200 amp service

<b>DOWNSTAGE LEFT</b>	1) 3 phase 800 amp service.
<b>DOWNSTAGE LEFT</b>	1) 3 phase 600 amp service.
<b>DOWNSTAGE LEFT</b>	1) 3 phase 400 amp service.
<b>DOWNSTAGE LEFT</b>	1) 3 phase 200 amp service.
<b>CATWALK CENTER</b>	1) 3 phase 600 amp service
	1) 3 phase 400 amp service.
<b>CATWALK NORTH</b>	1) 3 phase 600 amp service.
<b>CATWALK SOUTH</b>	1) 3 phase 600 amp service.
<b>CATWALK NW corner</b>	1) 3 phase 100 amp service.
<b>CATWALK NE corner</b>	1) 3 phase 100 amp service.
<b>CATWALK SW corner</b>	1) 3 phase 100 amp service.
<b>CATWALK SE corner</b>	1) 3 phase 100 amp service.



# TECHNICAL INFORMATION (cont.)

## Floor Covering

All shows from early September until late May will be over ice. The floor covering that we use is Polar Floor. Each sheet measures 4' x 8' x 1".

## Floor Size

The arena floor measures 85' x 200' (17,000 sq. ft.) with all dasher boards inserted, and 85' x 225' (19,125 sq. ft.) with the South end seats retracted and the corresponding dasher boards removed.

## Forklifts

There are 4 Toyota propane forklifts in house each with a load capacity between 5,600 and 6,800 pounds. They all have 15' rise and 4', 5' or 6' blades.

## House Lights

All arena lighting systems are controlled in the lighting control room located in the press box. The lighting control room is staffed during the event and is in communication with show personnel through the house Clearcom system or radio. Aisle lighting is provided from the catwalk during all "house black" shows to provide a safe environment for our guests. All suites go black in conjunction with the house.

**Building policy dictates that the houselights will be turned back on within two minutes following the artists leaving the stage unless discussed directly with building management.**

## Loading Dock

The loading dock is located on the West side of the building and is approached by way of Victory Avenue or Olive Street. There are six and up to eight docks potentially available. The height restriction on trucks is 14'6". Any parking needs should be discussed in advance with the event coordinator.

## Production Offices

There are two dedicated production offices. They are located stage left approximately 100' from the stage. All rooms have televisions with cable. Neither of the rooms have restroom or shower facilities.

- |                   |        |         |                |
|-------------------|--------|---------|----------------|
| • Production Room | Carpet | 16'x10' | <b>ED.0169</b> |
| • Production Room | Tile   | 12'x8'  | <b>ED.0172</b> |

## Rental Rates

Please contact Ken Kuhl (kkuhl@aacntr.com), Senior Vice President of Arena Programming, for all questions concerning availability, booking, and rental rates at American Airlines Center.

## Rigging Plans

All overhead rigging plans, including desired flying points and associated weights, side, and overhead view drawings must be submitted to American Airlines Center at least two weeks prior to the show. This is of particular importance for all set ups that are anything other than an end stage set up. We have a centerhung scoreboard which may affect your plans. Any concerns for weight capacity will be approved by AAC at the expense of the show. **Please see the Appendix for more detail.**



# TECHNICAL INFORMATION (cont.)

## Video Boards – Scoreboard, End Video Walls, Rings

The American Airlines Center was the first true 1080 scoreboard to ever be installed in an NBA or NHL arena. The center scoreboard is 4 sided with 30 feet wide by 18 feet high video displays utilizing a 4mm pixel pitch that produces a true 1920 x 1080 resolution. In addition to the main video screens the centerhung also has ribbon boards at the top and bottom as well as a third LED band directly above the main screens.

In addition to the centerhung video structure, there are two LED video walls at the north and south ends of the arena at the top of the 300 seating section. They are 72 feet wide by 24 feet high. There are also 2 continuous video ribbon boards on the lowest facades inside the bowl (100 level and 200 level), as well as a ring of LED along the fascia of the 300 level. These three boards are approximately 960 feet in diameter and 2.5' tall.

Please contact AAC Broadcast Services for specifics on files for each of these boards. Animated files can be delivered as MP4, MOV, or AVI files. Logos should be in vector art .ai (Adobe Illustrator) files. Still images can be in .bmp, .jpeg, .tif, or .tga files.

**Please see the Appendix for the scoreboard plan drawing.**

## Arena Sound System

The sound system provides full concert quality PA. There are 6 column JBL VLA speaker arrays (dead hung) with 10 cabinets each. There are an additional 30 JBL speaker cabinets to cover the upper bowl seats along with 8 JBL 6200 cabinets mounted in the scoreboard to help the VLA in the basketball floor seats. There are over 120 Crown MA amplifiers that can create over 300,000 watts of power to drive the PA that consists of over 1000 JBL speaker drivers. The system also includes a multi-zone special effects audio system, which was the first of its kind in an arena or stadium.

## Spotlights

There are 14 spotlights in house. The spotlights are located in the catwalk. There are five each on the East and West sides of the venue and four on the North end. The option also exists to have four spotlights in either the North or South ends.

## Staging Equipment

The American Airlines Center has a Stage Right staging system. The stage is variable in height between 48" and 72" in 2" increments. All decks are 4' x 8' with a weight capacity of 125 lbs per square foot. The stage at American Airlines Center has the capability of being as large as 60' x 48'. Skirting and railings are also available upon request. There is a limited supply of 4x8 decking with 12" or 24" legs.



## Telephone Service

Event telephones must be ordered through American Airlines Center at least two weeks prior to the event date. There will be a technician on site to handle all telephone connections at load-in.

### Telecom Charges:

Phone Connection	\$180
Ethernet Connection	\$410
AAC Public Wireless Internet	Free of charge / No password required



# POLICIES

## Box Office

The American Airlines Center box office is open Monday through Saturday and Sundays on event days from 10 AM until 5 PM; with extended hours on event days. The box office utilizes the Ticketmaster system. There are 10 exterior windows and 3 interior windows. The box office accepts cash and all major credit cards.

## Catering

Levy Restaurants, the facility food concessionaire, and can also be used for backstage catering needs. However, if the show is traveling with a caterer or a tour catering company is preferred they may be used. Please let your Event Manager know if the show is traveling with a caterer so arrangements can be made for them. There is a \$150.00 housekeeping fee if a show travels with a caterer. No open flame cooking, including the use of sternos, is allowed inside the building.

## Door Opening

The standard policy at American Airlines Center is to open doors 90 minutes prior to the scheduled start of the show. If the show's door opening requirement differs from the policy of the facility please be certain to let your Event Manager know. Please be aware that per facility policy, all guests will have to go through metal detectors. All bags smaller than 4.5" x 6.5" will have to go through an x-ray machine and all bags larger are prohibited.

## Drones

American Airlines Center does not allow any drones to fly inside or outside of our property.

## Furniture

American Airlines Center does not provide furniture and has limited quantities of pipe and drape available in house. Your Event Manager can assist you in making rental arrangements for those items.

## Hazers

The Event Manager for your show must be made aware of all fog machine/hazer usage. There can be no usage of these machines unless the Manager is aware and has given permission. A Fire Marshall must be present anytime there is haze inside the bowl.

## Labor

The exclusive labor company for all show labor is Upstage Center. The Event Manager will contact the labor company to make all labor calls. All hands are on a 4 hour minimum, except riggers which are a 6-hour minimum for load in and 4 hours on the load out. Overtime, at time and a half, is charged between midnight and 6am and on all legal holidays. Meal breaks are required after 5 hours.

## Liquor

In accordance with the Texas Alcoholic Beverage Commission, all liquor (including backstage liquor) must be purchased from Levy Restaurants, the official holder of the liquor permit. All liquor orders should be requested at least one week in advance through Levy.



# POLICIES (cont.)

## Merchandise Unloading

For the safety of the general public, building, and touring staff all merchandise deliveries need to occur in the loading dock.

## Parking

There are seven lots surrounding the American Airlines Center with over 4,600 parking spaces available.

- No overnight parking is permitted without the prior approval of building management. A remote lot does exist that can be reserved with the approval of building management.
- Passing out flyers and the sale of merchandise is strictly prohibited by outside groups or individuals without the approval of building management.
- There are no in and out privileges in the parking lots.
- Lexus Parking Garage is open all day. The Silver Garage and the surface lots open 2 hours prior to ticketed event time.

## Pyrotechnics

All pyrotechnics must be cleared through the Dallas Fire Department. The Dallas Fire Department can be reached at 214.670.5188.

## Smoking

There is a strict no smoking policy, including e-cigarettes, at the American Airlines Center.

## Shipping

Please reference the show name, your Event Manager's name, and your name on the packing labels. We do not accept shipments more than 48 hours in advance of a show without prior arrangements. Your Event Manager can assist with arranging outgoing shipments after your load out. The shipping address is:  
2500 Victory Avenue Dallas, TX 75219

## Sponsorships

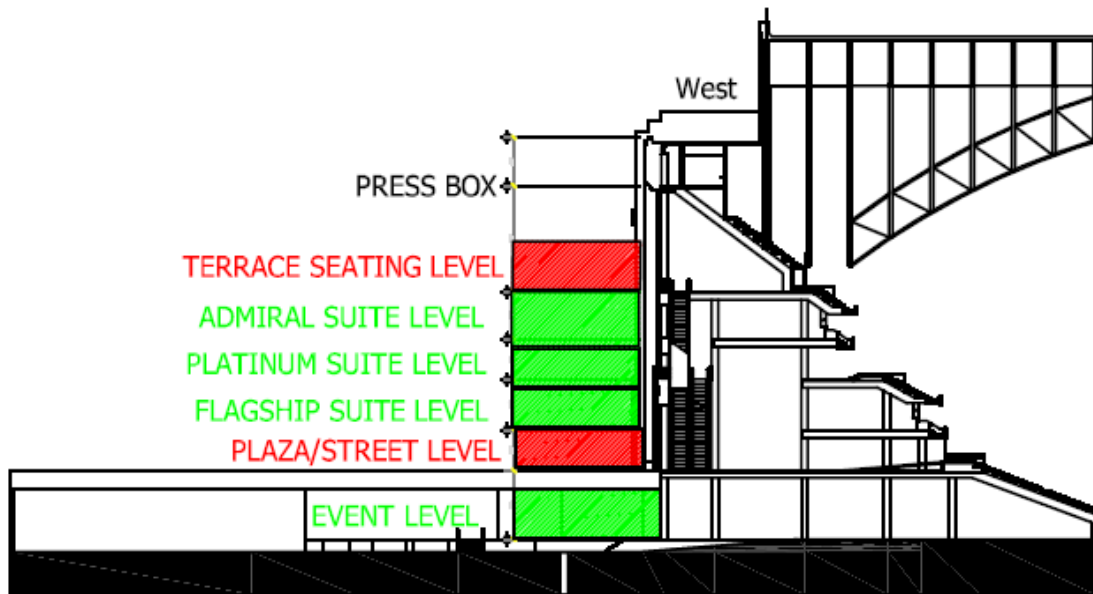
All sponsorships including giveaways and other promotional tools displayed or issued on American Airlines Center premises must be coordinated with your Event Manager. Due to some exclusivities within the building certain sponsors may be precluded from displays inside the building and on building property. No vendors will be allowed that involve personal grooming. **Please be aware that banners or any hanging materials are not permitted anywhere inside or outside American Airlines Center.**



## BUILDING FACTS

Architect:	David Schwartz	General Contractors:	Austin Commercial
Owner:	City of Dallas	Arena Management:	Center Operating Company
Cost:	\$420 Million	Parking:	4,624 spaces

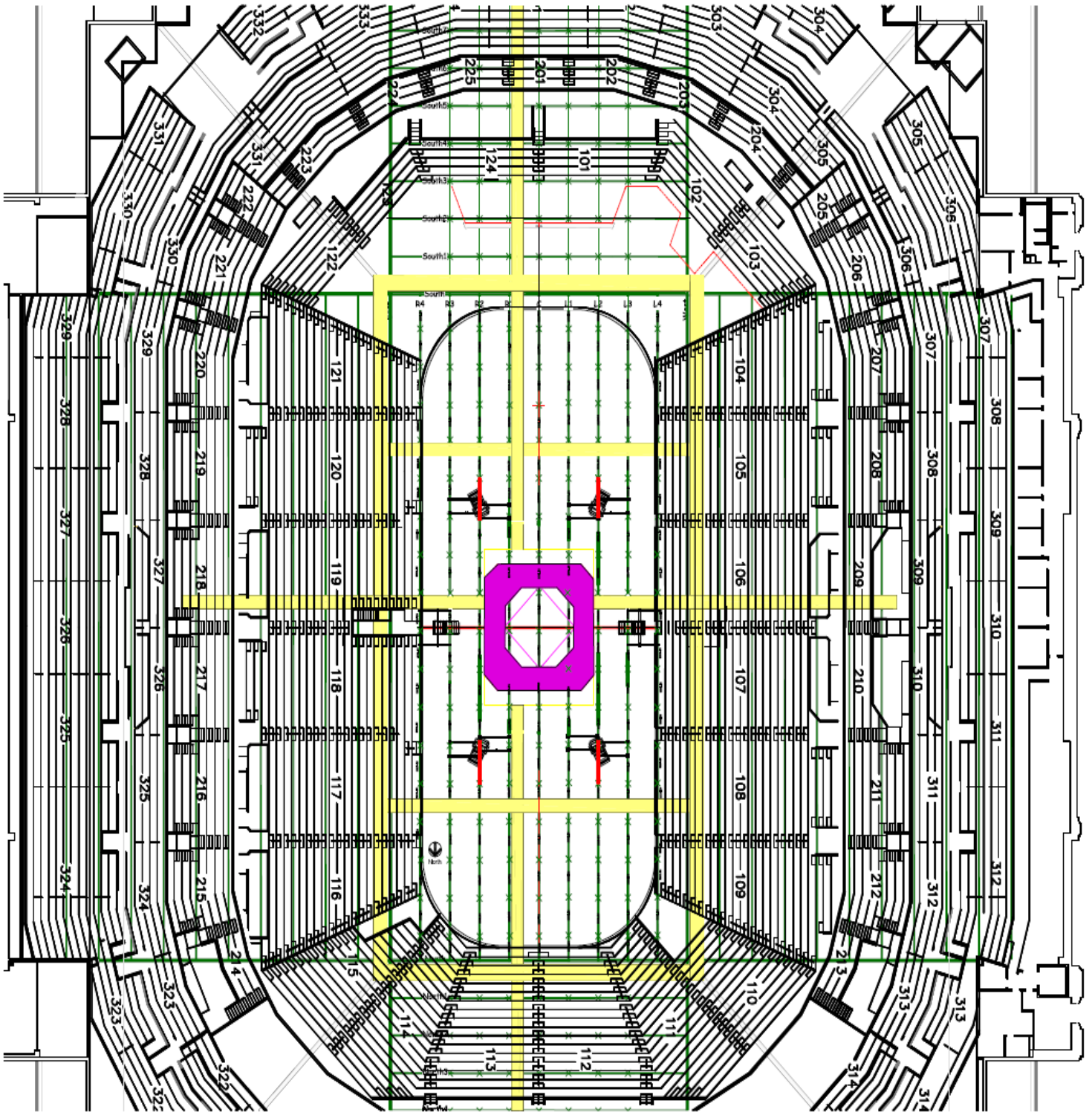
Seating Capacities:	Basketball	20,500
	Hockey	18,500
	Concerts	20,000+





# APPENDIX

## RIGGING INFORMATION









## RIGGING RULES WITHIN THE DASHER AREA:

The dasher roughly outlines the area within the roof that has the major roof trusses, which support the rest of the secondary trusses.

The rules for the major trusses and the secondary trusses inside the dasher are 3000 pounds any low chord span between panel points. If you have no load contributory to adjacent panel points you can go up to 6000 at a panel point. See the attached drawing.

Scale:  $1/8" = 1'$

### AMERICAN AIRLINES CENTER, DALLAS, TX.

contact John Bleich for more info @ [johnb@prorig.com](mailto:johnb@prorig.com) or 214-914-9710

Typical height = 122.5' @ upstage, 125' @ center

Span in up/dn trusses = 10'10" center-center

Span in x-stage trusses = 11'10" center-center

5' Baskets on most steel except in panel point

10' baskets on main trusses (North, East, West, South mains)

No leg can be shorter than 5B-10 in length when attaching to adjacent trusses

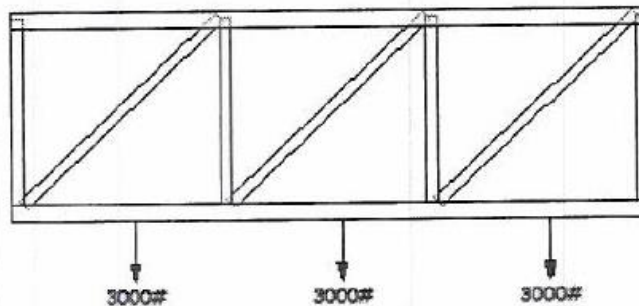
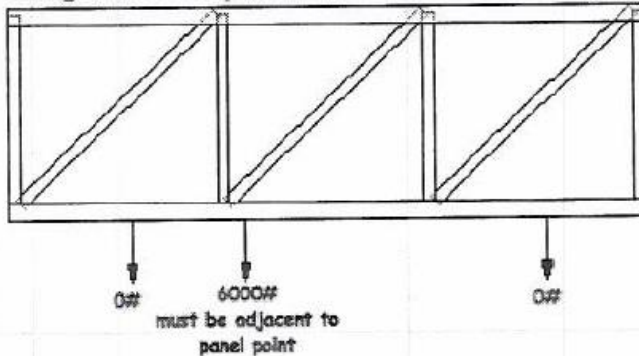
No leg can be shorter than 5B-20 when attaching in a 22' span

No leg can be shorter than 5B-30 when attaching in a 33' span

3000# max per span between verticals (panel points)

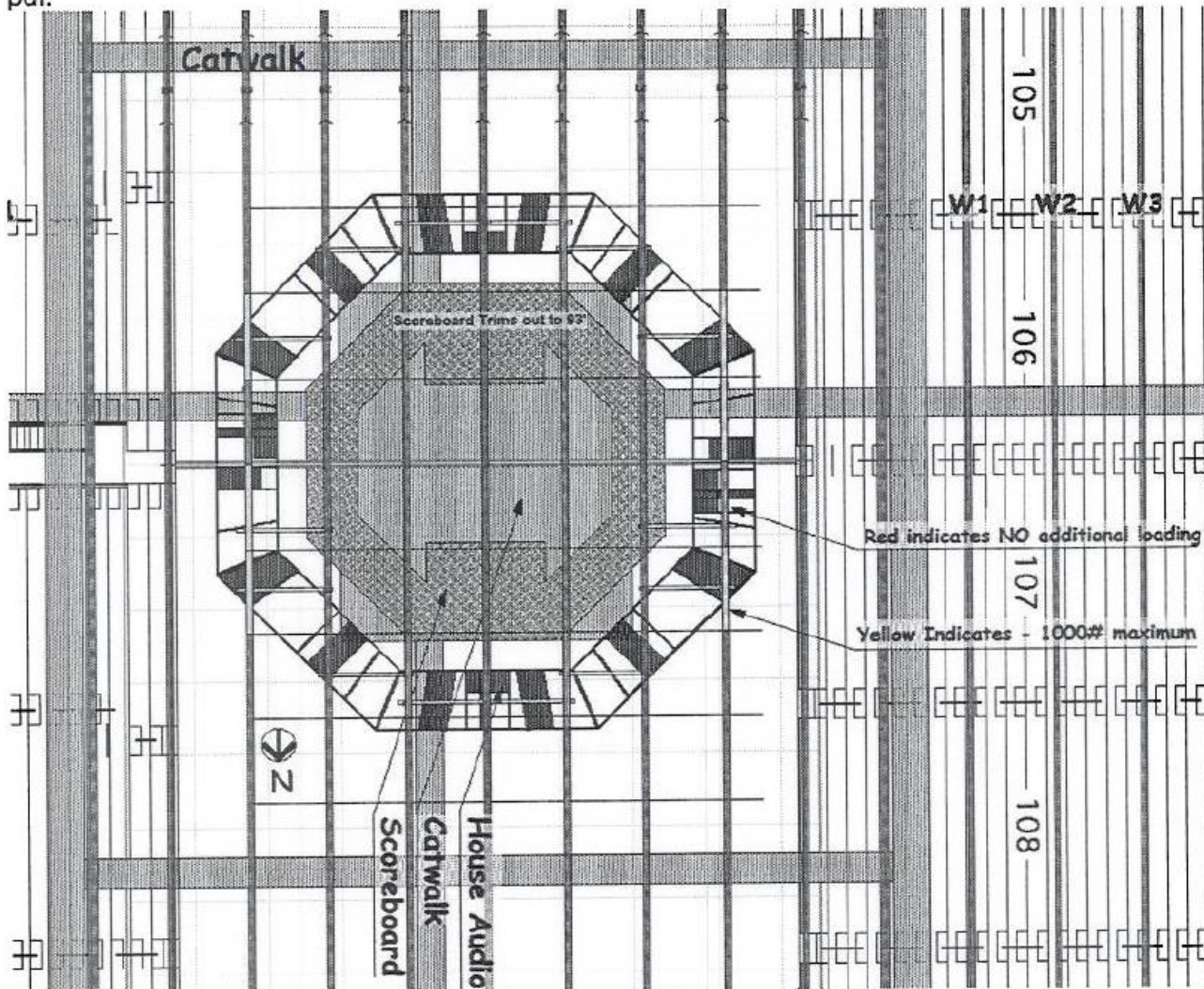
6000# max if adjacent spans not used but must be loaded close to the panel point

loading in house PA spans not allowed w/o review and approval





Around the scoreboard you will notice some beams that are shaded red or yellow on the attached pdf.



The red is a no fly zone because house PA exceeded the amount that the engineers had reserved for the audio on the beam. The beam span indicated in yellow is good for 1000 pounds. **RIGGING OUTSIDE OF THE DASHER AREA:**

The East and West sides are similar in their truss design in that they are inverted T chords on the low chord of the truss. The engineering company allows us to rig 1000 pound dead hangs only at the panel points of these trusses. Some of these trusses have no fall protection so it can be time consuming getting out to the points to rig from. The north end and south end are similar in the truss design but several of the trusses were braced on the horizontal plane with a 2x2 tube that helps stabilize it for bridling. If the tube is not present we are only allowed to do dead hangs on those trusses. The rule for the braced trusses is the same as the truss loading within the dasher in that you could hang 3000 pounds bridled off of them. Most of the south end (upstage) is braced, but in hind sight we should have put them in at the mid span areas too (that is between the panel points), because when McCartney came in the lead engineer was concerned about the horizontal loading from bridles and changed the rules on us for that area. Most of the time the minimum bridle leg is a 5B-10 leg length, but when the horizontal loading is high he had us increase the depth of the bridles to reduce the loading. So for instance on 2 ton points upstage we went to 5B-20 legs as the minimum. Anytime the loading is high in a span it is safer to assume that you use long legs to reduce the horizontal loading. The beam space under the catwalks is accessible but it is very time consuming to rig under there, it is faster to plan to rig the bridles at an angle and if a dead hang is needed under the catwalk, it is faster to do a bridle in-line on the same beam.

June 21, 2001

JUN 26 2001

HKS, INC.

Mr. Joe Lankman  
HKS, Inc.  
1919 McKinney Avenue  
Dallas, Texas 75201

Re: Final Assessment of Roof Loads at Center Stage Area  
American Airlines Center  
Walter P. Moore Project No. 98824-00

Dear Joe:

Over the past several days, we have received detailed loading information regarding the sound ring (from Production & Rigging Resources, Inc.) and the equipment to be located on the center catwalk platform (from ACD). To the best of our knowledge, this completes the definition of roof loading at the center stage area of the building. Given this information, additional criteria regarding subsequent loading capacity are necessary, as follows:

**Catwalk Platform.** Live load capacity is sufficient for personnel access, but no additional equipment can be located on the catwalk platform.

**Rigging Loads.** With the sound ring in place, total center stage (or end stage) rigging capacity is 130,000 pounds. Additionally, truss panels loaded by the sound ring cannot also be used to support rigging loads.

**Sound Ring Removal.** We understand that the sound ring may have to be removed for certain center stage shows. Under this scenario, center stage rigging capacity is 180,000 pounds. End stage rigging capacity is 150,000 pounds.

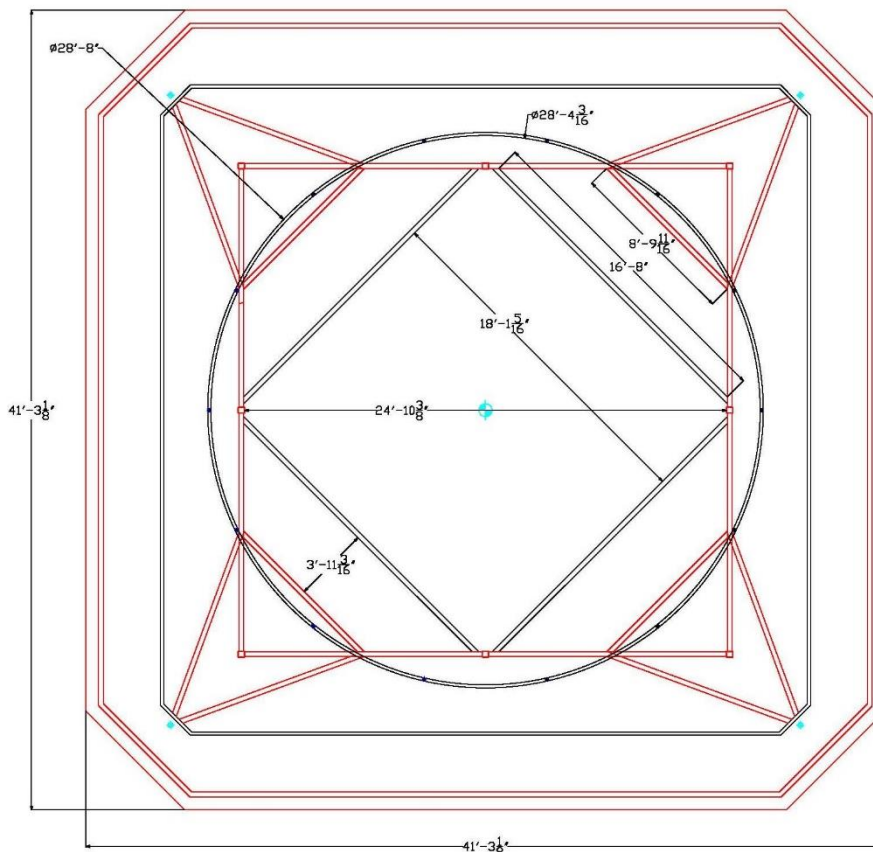
We are currently documenting the above on our drawings. Should you have any questions, please do not hesitate to call.

Very truly yours,

WALTER P. MOORE AND ASSOCIATES, INC.

*David A. Platten*

David A. Platten, P.E.  
Principal

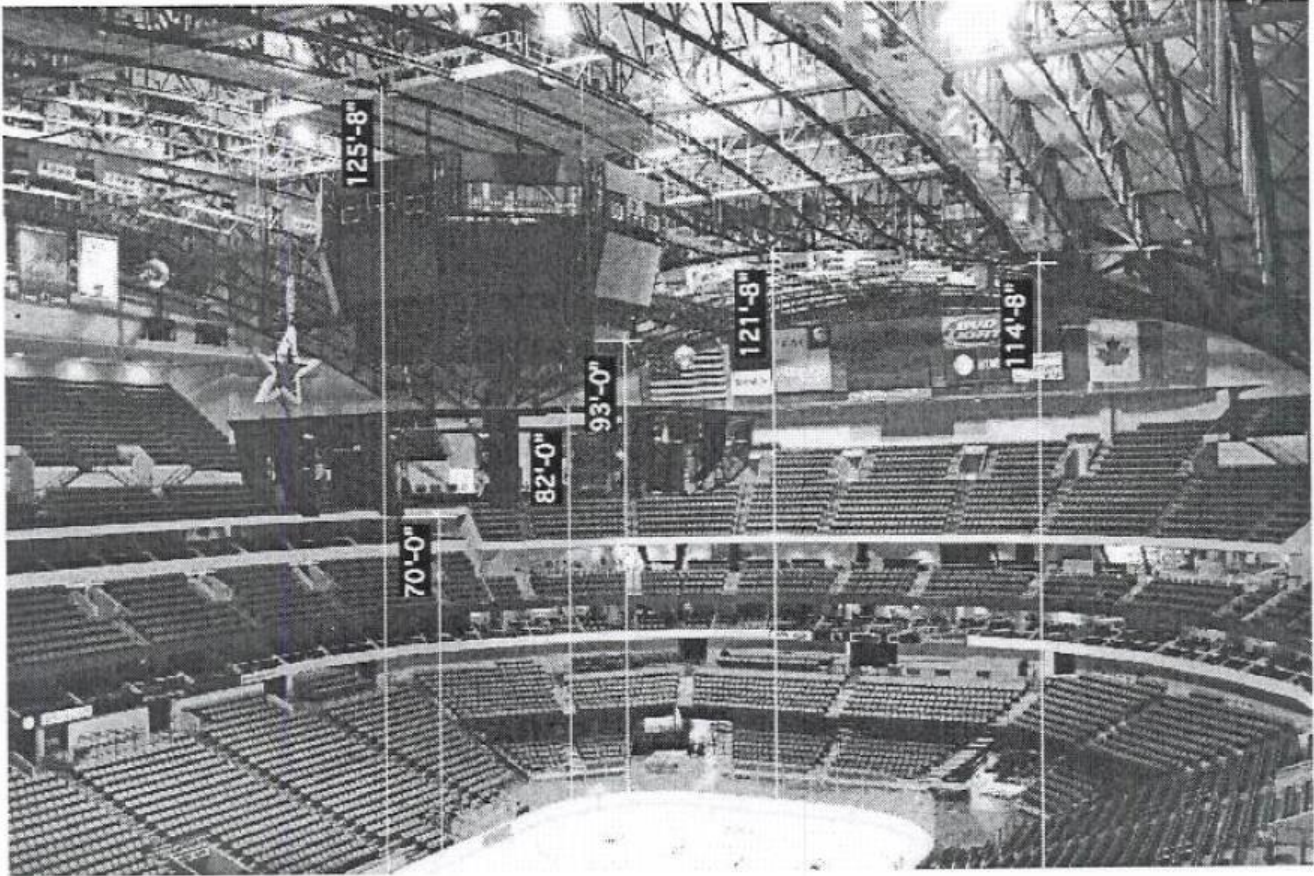


AAC CENTER HUNG STRUCTURE PLAN VIEW





## American Airlines Center Elevations



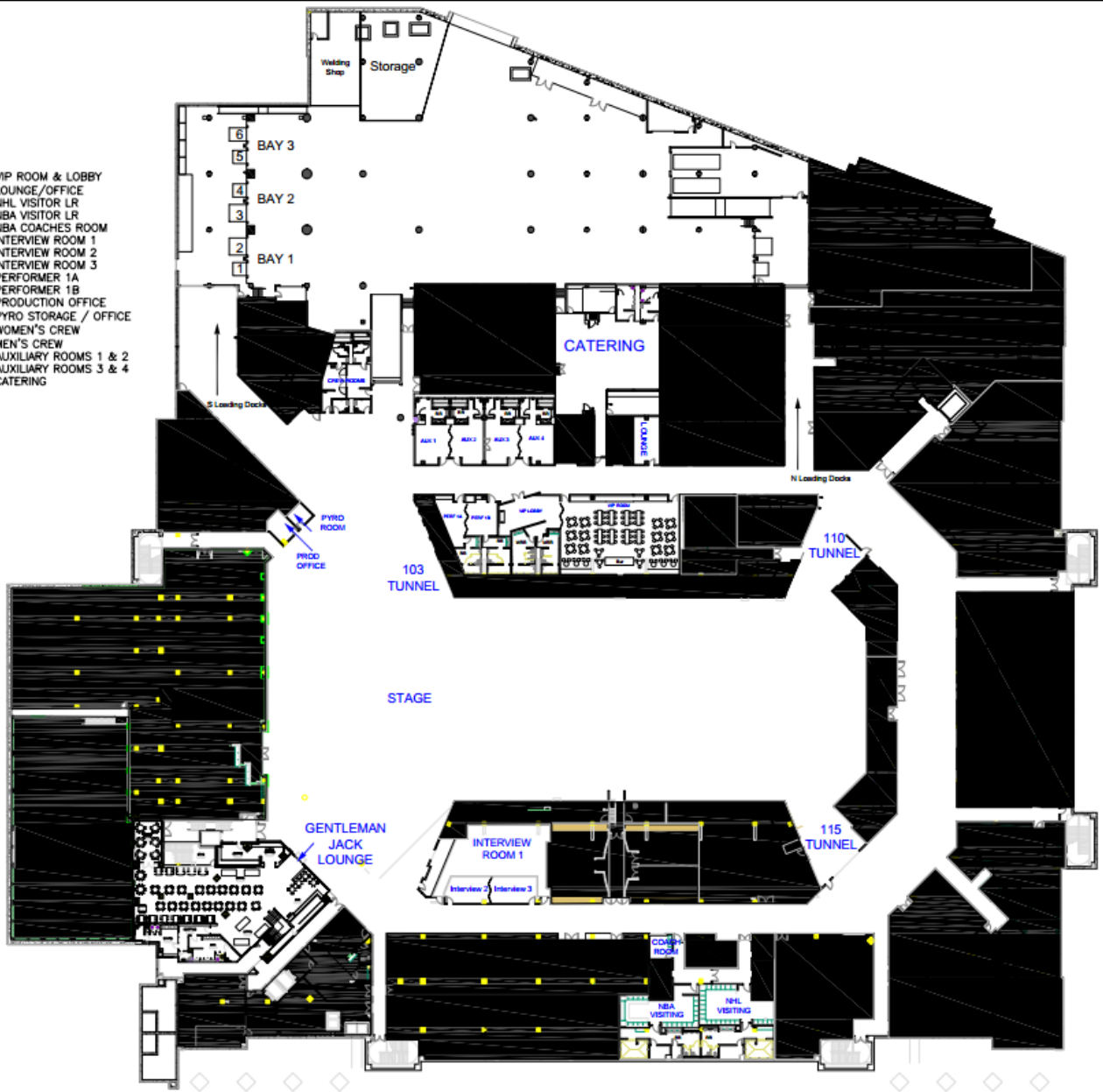
**We require rig plots, overlays, points and weights to be submitted no later than 14 days prior to the show date for any rig over 130,000 pounds in order to get engineering approval in a timely manner.  
There will be a fee charged for this service.**



# EVENT LEVEL

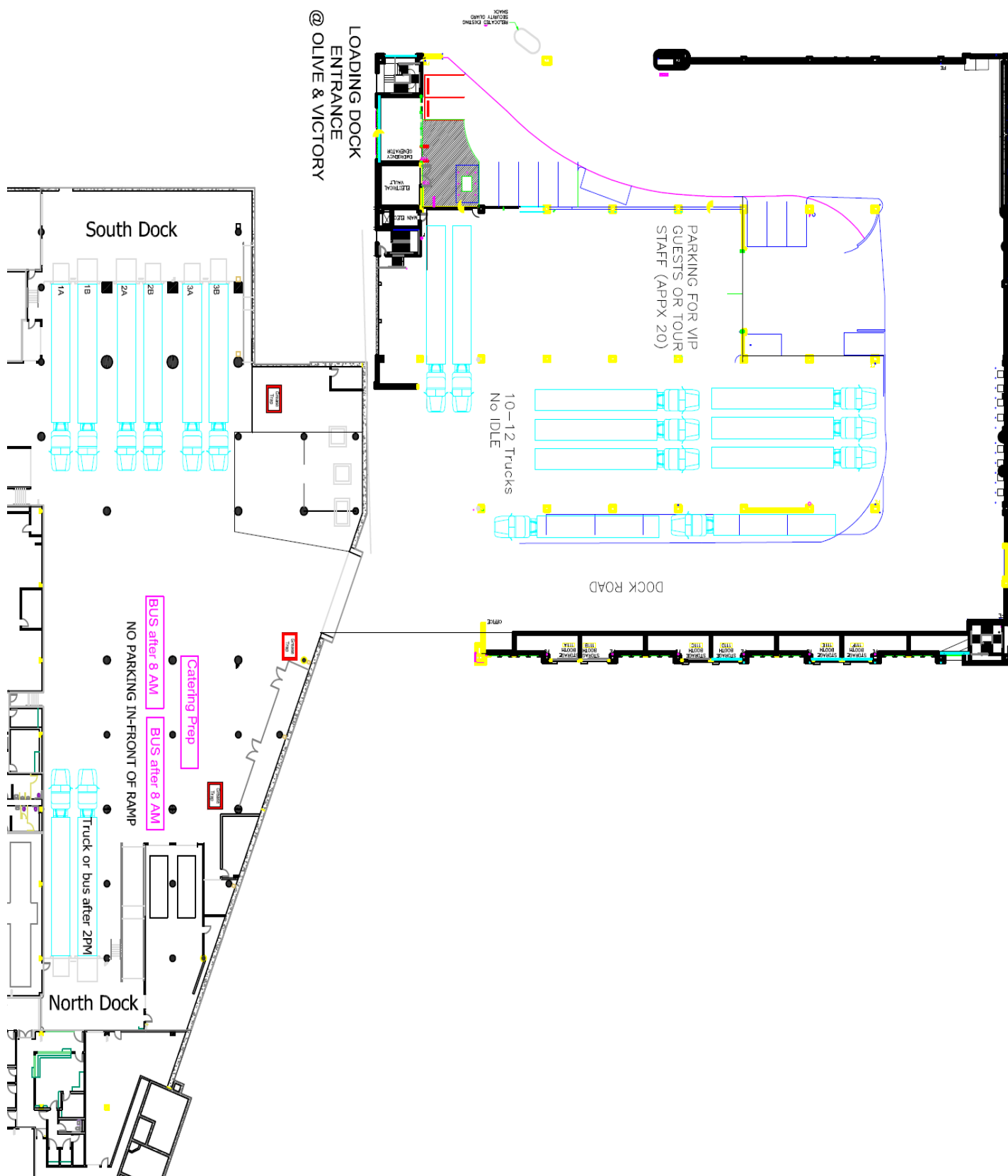
## LEGEND

- EA.0003 VIP ROOM & LOBBY
- EA.0016B LOUNGE/OFFICE
- EB.0081 NHL VISITOR LR
- EB.0089 NBA VISITOR LR
- EB.0091 NBA COACHES ROOM
- EC.0101 INTERVIEW ROOM 1
- EC.0102 INTERVIEW ROOM 2
- EC.0103 INTERVIEW ROOM 3
- ED.0153 PERFORMER 1A
- ED.0154 PERFORMER 1B
- ED.0169 PRODUCTION OFFICE
- ED.0172 PYRO STORAGE / OFFICE
- ED.0181 WOMEN'S CREW
- ED.0184 MEN'S CREW
- ED.0187 AUXILIARY ROOMS 1 & 2
- ED.0191 AUXILIARY ROOMS 3 & 4
- ED.0195 CATERING



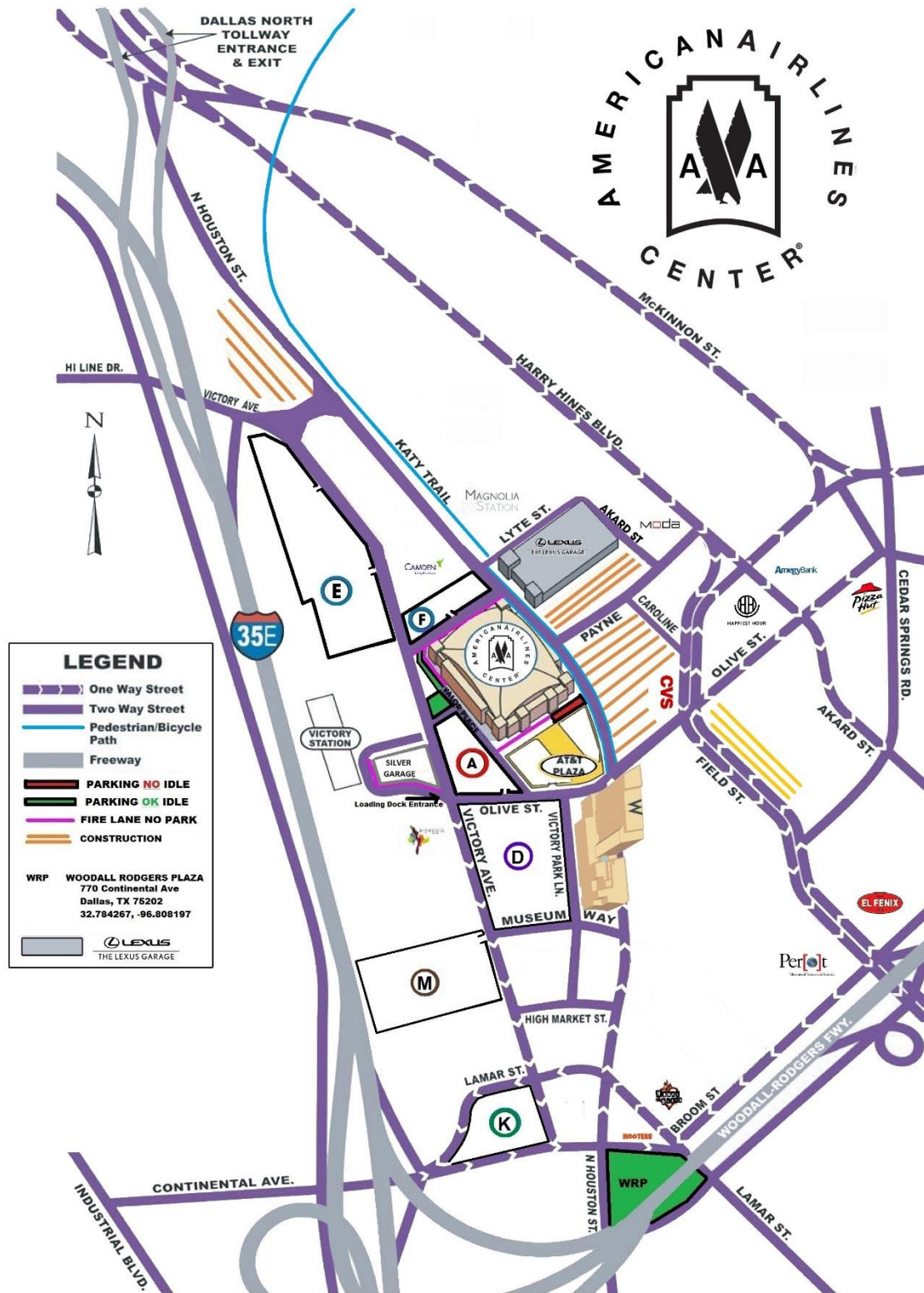


## LOADING DOCK/SILVER GARAGE BASEMENT





# PARKING MAP



## BUS/TRUCK PARKING • RESTRICTIONS APPLY

Loading Dock, Silver Garage Basement, Woodall Rodgers Plaza, West Patio, South East Patio





# ARENA AREA MAP

## AAC Parking Map

### LEGEND

- Blue Parking Pass
- Brown Parking
- Disabled Parking (Lot F only)
- Green Parking Pass
- Preferred Parking
- Public Self Parking (not affiliated with AAC)
- Purple Parking
- Orange Parking
- The Lexus Garage
- Silver Parking (pass or cash)
- VIP Blue
- Cash Parking (Limited Availability)
- Box Office
- Gold Parking
- Northeast Platinum Entrance
- Southeast Platinum Entrance
- Jack Daniel's Old No. 7 Club
- Eighteen/76
- Uber pickup/drop-off

