



# ABOUT F&M BANK ARENA



F&M Bank Arena is set to open in Summer 2023 in downtown Clarksville, TN. The venue's primary tenant will be Austin Peay State University men's and women's basketball teams. In addition, the facility's flexible event space will host sporting events, concerts, rehearsals, banquets, conventions, trade shows and more.

Located 50 miles northwest of Nashville on I-24 in Montgomery County, Clarksville is a growing city with a small town feel. Home to the Fort Campbell U.S. Army Installation (101st Airborne Division, Air Assault) and was recently labeled as the most desirable zip code in America by Opendoor.com.

## POPULATION

**CITY OF CLARKSVILLE:**

**166,722**

**MONTGOMERY COUNTY:**

**220,069**

**METROPOLITAN AREA:**

**320,535**

**POPULATION GROWTH**

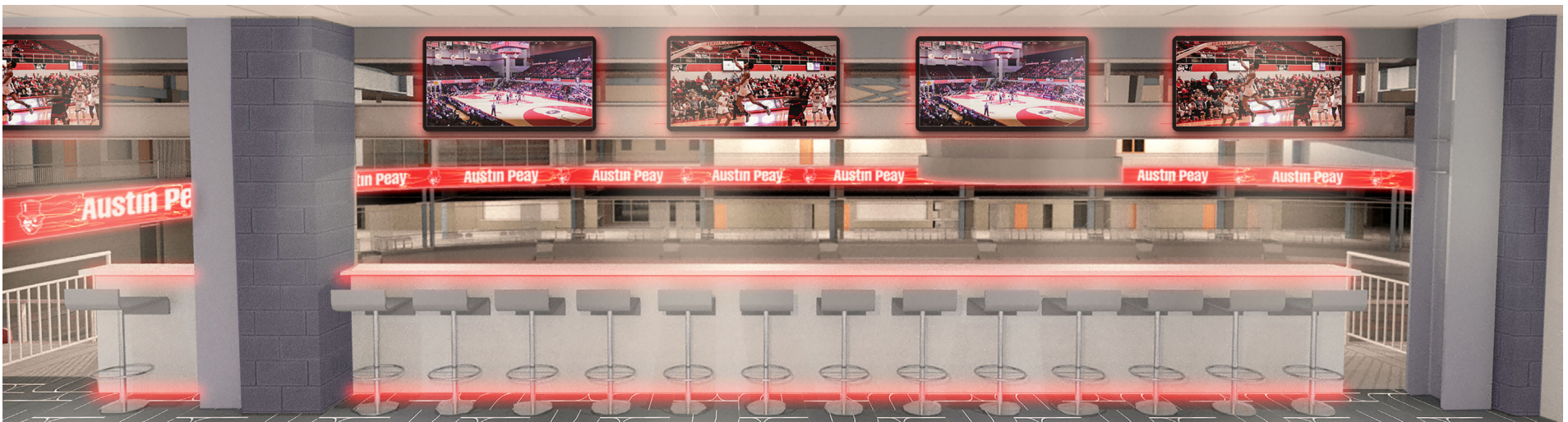
**SINCE 2010:**

**19%**

**AVERAGE AGE:**

**29.5, ONE OF TN'S  
YOUNGEST CITIES**

# F&M BANK ARENA



# ARENA MANAGEMENT



The Nashville Predators and Bridgestone Arena have taken the next step in their operational development with the addition of the newly-created Sabertooth Sports & Entertainment, LLC (SS&E), which will oversee the day-to-day management of F&M Bank Arena.



## BOOKING CONTACTS

### DAVID KELLS

**EVP, ENTERTAINMENT & VENUES**

**[DKELLS@NASHVILLEPREDATORS.COM](mailto:DKELLS@NASHVILLEPREDATORS.COM)**

**615-770-2096**

### KYLIE WILKERSON

**GENERAL MANAGER, F&M BANK ARENA**

**[KWILKERSON@FMBANKARENA.COM](mailto:KWILKERSON@FMBANKARENA.COM)**

**615-678-2341**



**FM BANK**  
**ARENA**



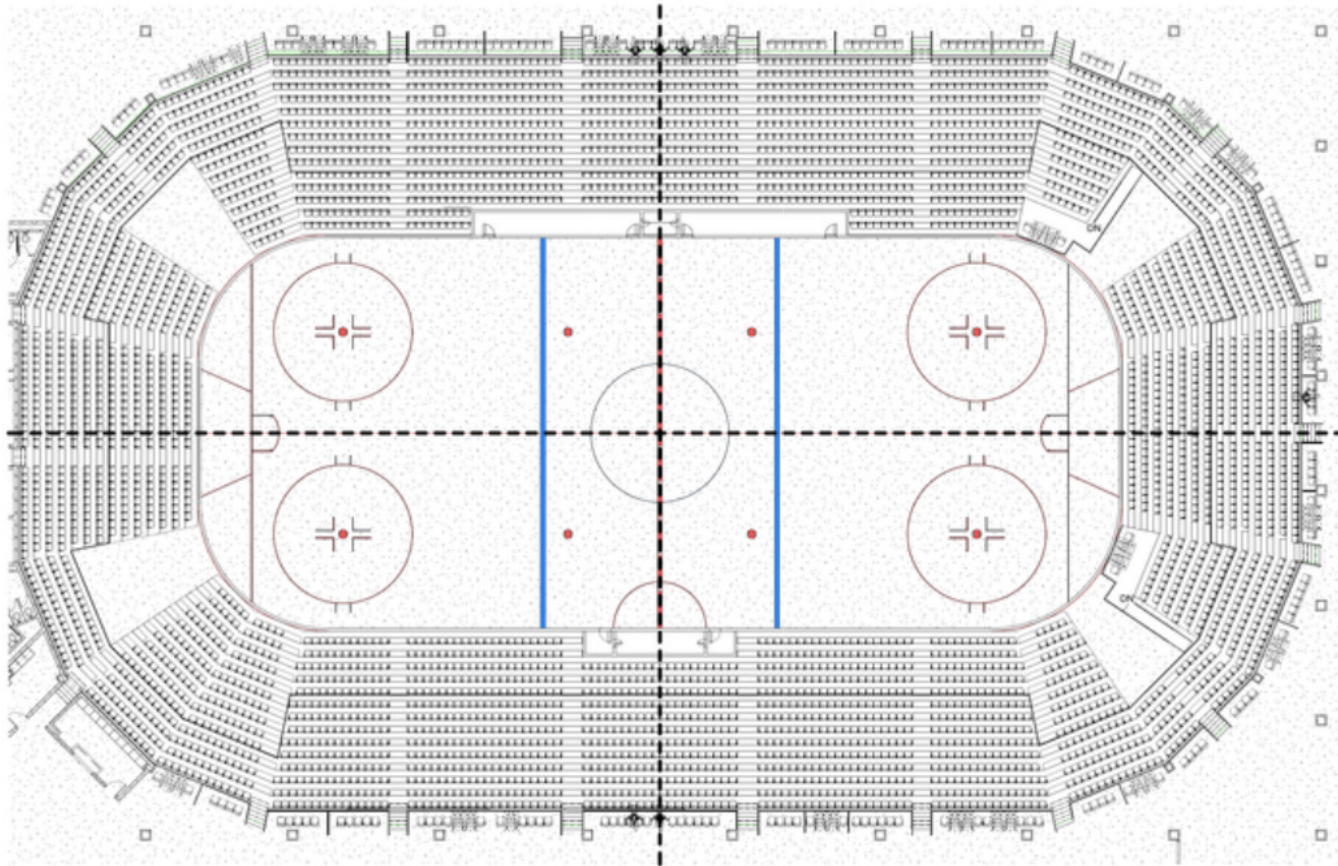


**FM BANK**  
**ARENA**



## CAPACITY 5,500

# SEATING HOCKEY



B3 | Venue Plan - Hockey

**CAPACITY 5,000**

# VENUE INFORMATION



**Load In:** (4) Loading Docks, located on 1st St between Main St & College Street

**Dressing Rooms:** (3) Star Dressing Rooms, (4) Locker Rooms, Catering / Office Space

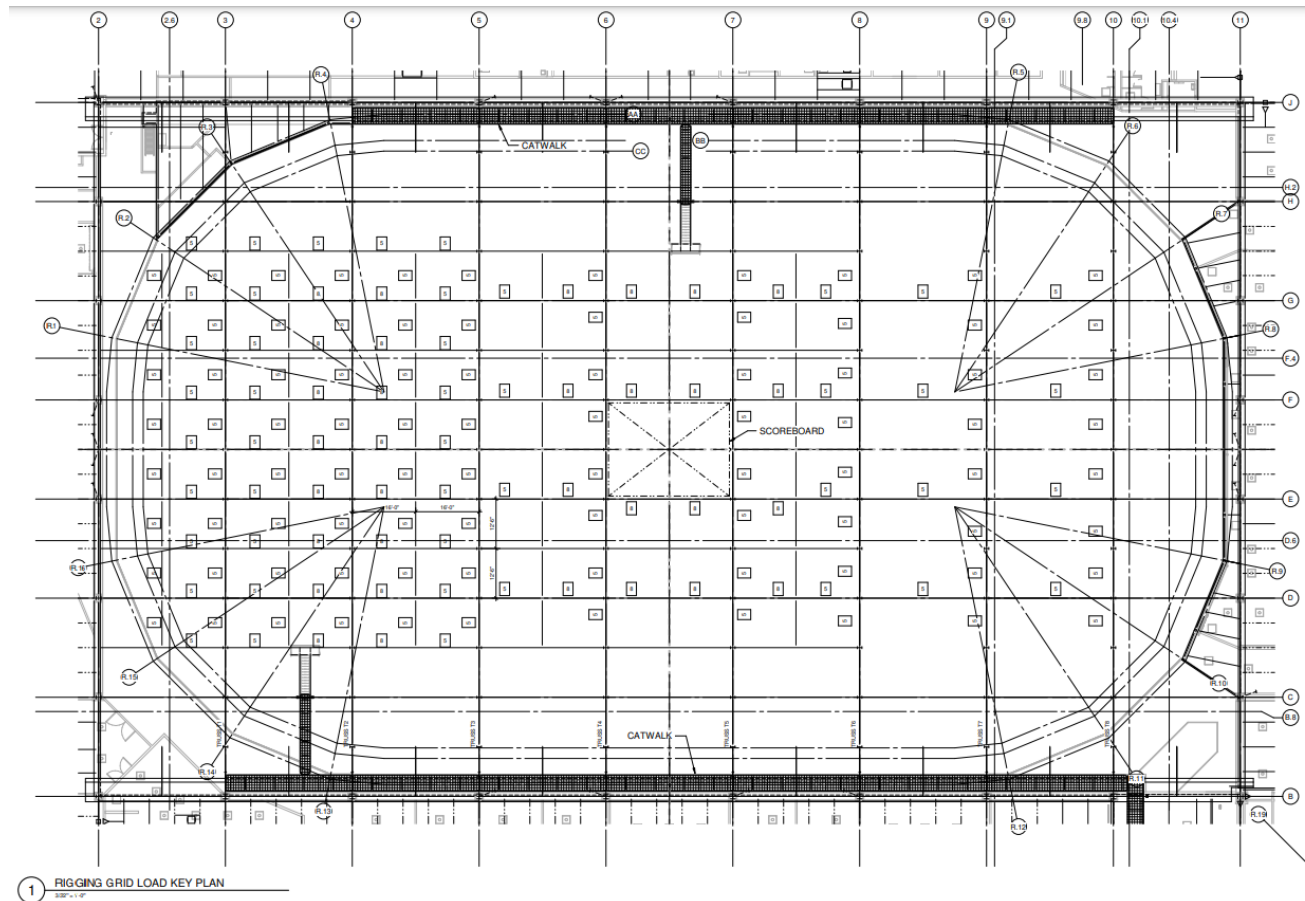
**Levels (3):** Event Level, Concourse Level, Suite Level



# RIGGING

**Rigging Capacity:** 160,000lbs    **Steel Height:** 65'    **Bay Size:** 12' 6" x 16'

**Rigging Access:** Catwalk and steel accessible via elevator / stairs.



# RIGGING



## RIGGING LOAD CRITERIA

NOTES BELOW DEFINE THE ACCEPTABLE LOADING CRITERIA APPLICABLE TO ALL RIGGING LOADS HUNG FROM THE RIGGING BEAMS, TRUSS BOTTOM CHORDS, AND CATWALK SUPPORT BEAMS FOR THE ARENA.

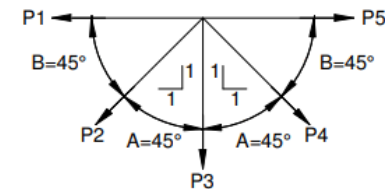
1. ALL RIGGING LOADS SHALL BE SUSPENDED ONLY FROM THE MEMBERS INDICATED ON THE RIGGING LOAD PLAN HEREIN. OTHER FRAMING MEMBERS SUCH AS ROOF JOISTS, ROOF BEAMS, TRUSSES, CATWALK SUPPORT BEAMS (EXCEPT AS ALLOWED BY NOTE) SHALL NOT BE USED FOR THE SUPPORT OF RIGGING LOADS.
2. THE MAXIMUM WORKING LOAD SUPPORTED BY A RIGGING BEAM SEGMENT OR TRUSS BOTTOM CHORD SEGMENT MARKED **5** SHALL NOT EXCEED 5,000 POUNDS. THIS LOAD MAY BE A SINGLE POINT LOAD OR A COMBINATION OF LOADS ACTING ANYWHERE ALONG THE MEMBER SO LONG AS THE TOTAL LOAD ON THE SEGMENT DOES NOT EXCEED 5,000 POUNDS. SEE NOTE 5 BELOW FOR LIMIT ON TOTAL RIGGING LOAD CARRIED BY ANY TRUSS.
3. THE MAXIMUM WORKING LOAD SUPPORTED BY A RIGGING BEAM SEGMENT OR TRUSS BOTTOM CHORD SEGMENT MARKED **8** SHALL NOT EXCEED 8,000 POUNDS. THIS LOAD MAY BE A SINGLE POINT LOAD OR A COMBINATION OF LOADS ACTING ANYWHERE ALONG THE MEMBER SO LONG AS THE TOTAL LOAD ON THE SEGMENT DOES NOT EXCEED 8,000 POUNDS. SEE NOTE 5 BELOW FOR LIMIT ON TOTAL RIGGING LOAD CARRIED BY ANY TRUSS.
4. REFER TO LIMITS FOR MAXIMUM HANGING LOAD ORIENTATION FOR ANGULAR ORIENTATION LIMITS FOR ANY RIGGING LOAD. THE MAXIMUM PERMISSIBLE LOAD FOR LOADS WHICH FORM AN ANGLE GREATER THAN 45 DEGREES FROM VERTICAL SHALL BE REDUCED 25% FROM THE MAXIMUMS INDICATED ABOVE.
5. THE MAXIMUM TOTAL COMBINED RIGGING LOAD CARRIED BY ANY TRUSS, INCLUDING THE RIGGING LOAD ATTRIBUTABLE TO THE RIGGING BEAMS AND GIRDERS SUPPORTED BY THE TRUSS, SHALL NOT EXCEED THE FOLLOWING:

TRUSS T1: 60,000 POUNDS TOTAL MAXIMUM  
TRUSS T2: 80,000 POUNDS TOTAL MAXIMUM  
TRUSS T3: 60,000 POUNDS TOTAL MAXIMUM  
TRUSS T4: 80,000 POUNDS TOTAL MAXIMUM (SEE NOTE 6)  
TRUSS T5: 80,000 POUNDS TOTAL MAXIMUM (SEE NOTE 6)  
TRUSS T6: 40,000 POUNDS TOTAL MAXIMUM  
TRUSS T7: 20,000 POUNDS TOTAL MAXIMUM  
TRUSS T8: 20,000 POUNDS TOTAL MAXIMUM

THE MAXIMUM TOTAL RIGGING LOAD TO THE HIGH ROOF SHALL NOT EXCEED 160,000 POUNDS.

6. RIGGING LOAD LIMITS LISTED ABOVE ARE IN ADDITION TO THE RATED SCOREBOARD CAPACITY (25,000 LBS) AND TWELVE PRIMARY SPEAKER CLUSTERS (1,100 LBS EACH, WHICH INCLUDES THE HOIST).
7. RIGGING MEMBER SEGMENTS MARKED **5** AND **8** SHALL BE IDENTIFIED WITH 2" TALL WHITE LETTERS PAINTED ON THE TOP AND SIDES OF THE SEGMENTS AS FOLLOWS : "RIGGING CAPACITY 5,000 LB" AND "RIGGING CAPACITY 8,000 LB" RESPECTIVELY.

LIMITS FOR MAXIMUM HANGING LOAD ORIENTATION



P = RIGGING LOADS ON MEMBERS

1. RIGGING LOADS HUNG WITHIN ENVELOPE DEFINED BY ANGLE "A" MAY BE FULL LOAD VALUES AS DEFINED IN NOTES ABOVE.
2. RIGGING LOADS HUNG WITHIN ENVELOPE DEFINED BY ANGLE "B" SHALL BE REDUCED TO 75% OF THE LOADS DEFINED IN NOTES ABOVE

# SHOW POWER



LOCATION	AMPS	Phase	Volts
Up Stage Right	1-400	3	120/208
	3-200	3	120/208
Up Stage Left	1-400	3	120/208
	3-200	3	120/208
Northeast Floor Entrance	2-200	3	120/208
Southeast Floor Entrance	2-200	3	120/208
Bus Hookups on Loading Dock	1-400	3	120/208
	1-200	3	120/208

\* Production is required to secure electrician through local stagehand labor provider for all show power tie in